

*Lewisville
Independent
School
District*



Quarterly
Report
2Q18

*Learn from Yesterday...
Understand Today...
Plan for Tomorrow*



TEMPLETON
DEMOGRAPHICS



Economic Conditions – DFW Area (June 2018)

3.1%

113,710 new jobs
National rate 1.5%



Job Growth

35,264

3,751 more
starts than 2Q17



Annual
Home Starts

Unemployment
Rate



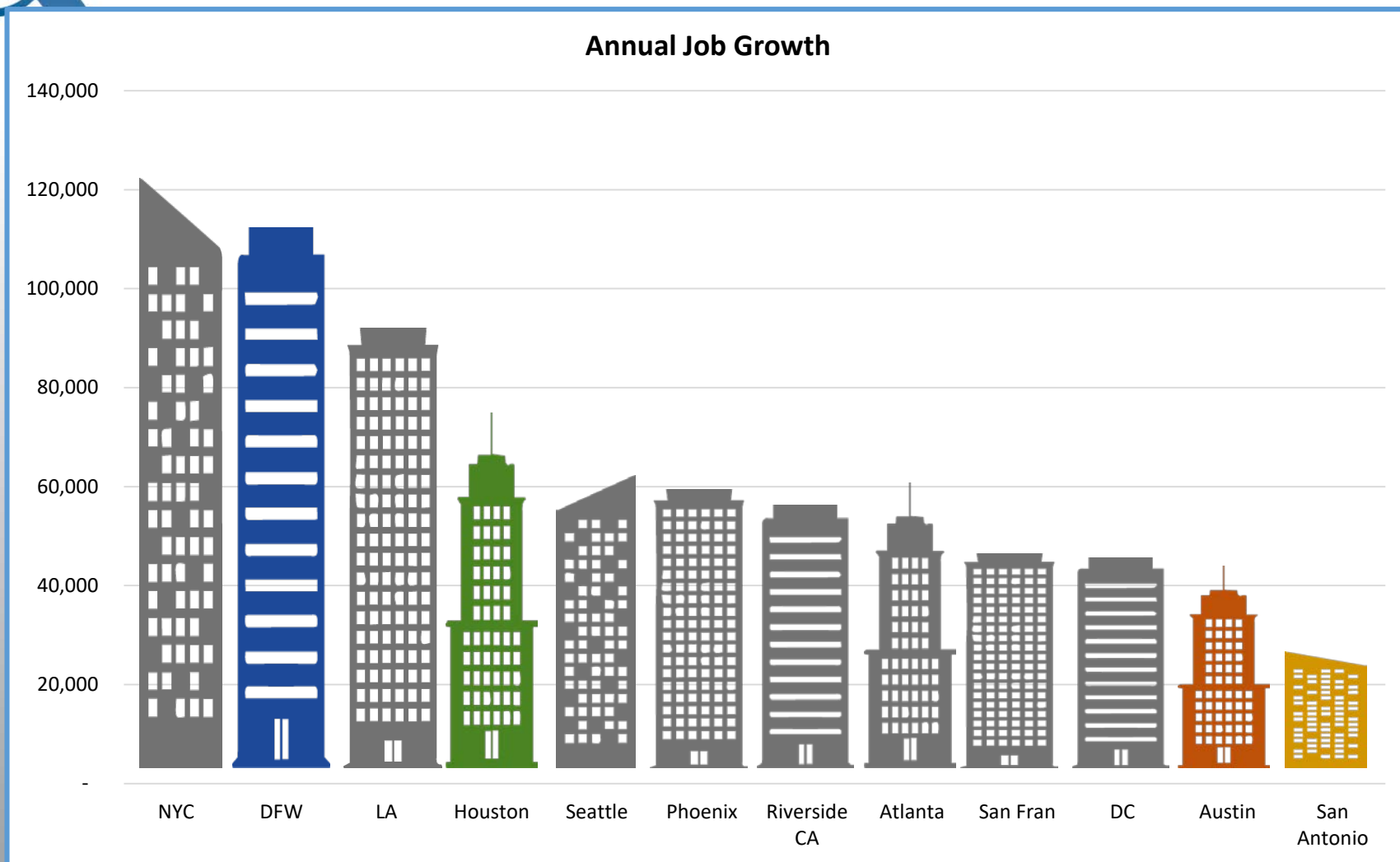
U.S. 4.2%
Texas 4.2%
DFW MSA 3.8%
Lewisville 3.5%

-0.2%





Economic Conditions – Job Growth

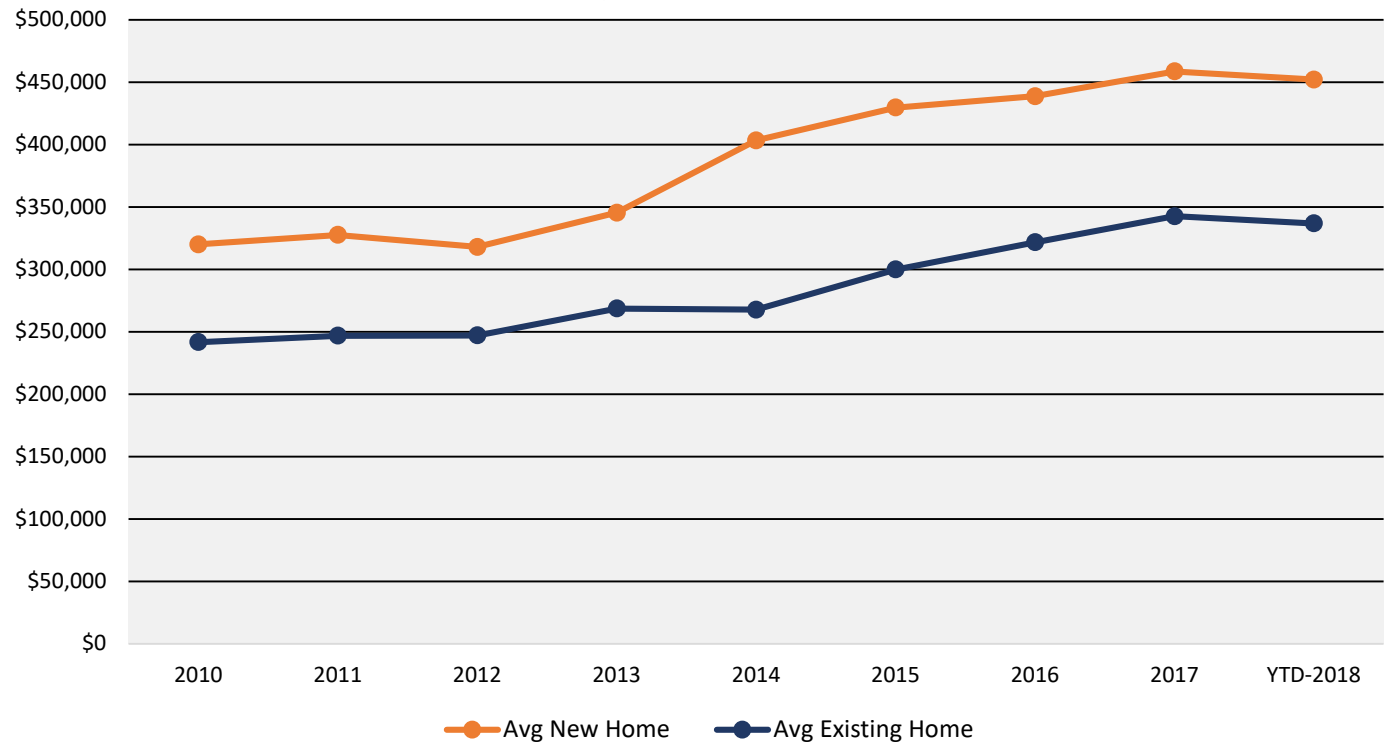


- Texas has 4 of the top 25 job growth cities in the U.S.
- DFW grew almost 115,000 jobs in the last 12 months and is second only to New York City in number of jobs



LISD Historical Home Sale Price Analysis

New vs. Existing Home Sale Price 2010-2018



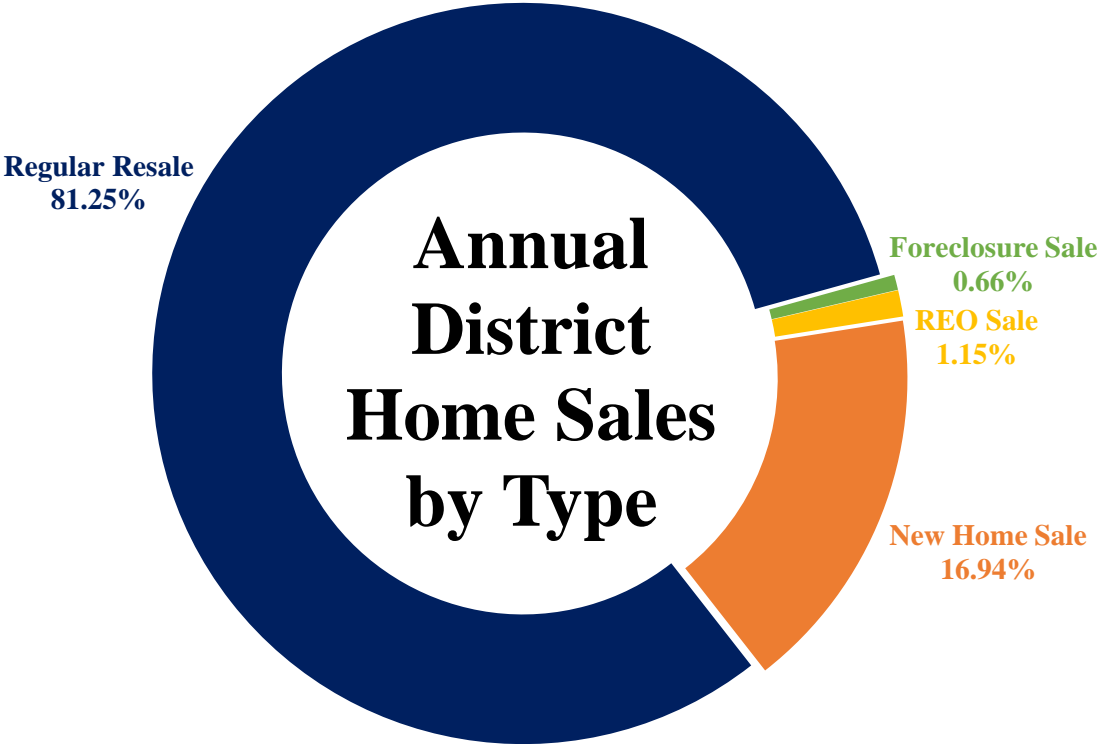
	Avg New Home	Avg Existing Home
2010	\$320,002	\$241,676
2011	\$327,488	\$246,732
2012	\$317,963	\$247,080
2013	\$345,303	\$268,574
2014	\$403,285	\$267,676
2015	\$429,589	\$299,834
2016	\$438,681	\$321,599
2017	\$458,573	\$342,563
YTD-2018	\$452,072	\$336,732

- Since 2010, the average price for a new home in LISD has risen 42%, a difference of \$132,070
- The average price for an existing home in LISD has risen 39% since 2010, a rise of \$95,056



Lewisville ISD Home Sales

July 2017 – June 2018 Home Sales by Type



- The average sale price for a new home in LISD in the last 12 months was \$452,640
- The average sale price of an existing home in LISD in the last 12 months was \$340,919
- There was a difference of \$111,721 between the average new home and average existing home prices in the last 12 months





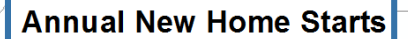
DFW New Home Ranking Report

ISD Ranked by Annual Closings – 2Q18

Rank	District Name	Annual Starts	Annual Closings	VDL	Future
1	Prosper ISD	2,939	2,663	5,419	23,144
2	Frisco ISD	2,475	2,526	4,984	4,480
3	Denton ISD	2,462	2,162	3,104	19,240
4	Northwest ISD	1,870	1,858	1,732	24,776
5	Dallas ISD	1,885	1,700	2,103	7,040
6	Little Elm ISD	1,448	1,497	1,805	2,573
7	Eagle Mt.-Saginaw ISD	1,438	1,172	1,392	21,135
8	Forney ISD	1,389	1,154	1,373	14,003
9	Lewisville ISD	1,176	1,034	2,269	3,897*
10	Rockwall ISD	932	883	2,153	8,856
11	McKinney ISD	795	813	1,941	8,801
12	Wylie ISD	909	811	972	3,978
13	Crowley ISD	979	711	972	12,044
14	Midlothian ISD	756	685	1,212	19,610
15	Mansfield ISD	725	673	1,390	6,466
16	Allen ISD	687	631	1,235	1,150
17	Keller ISD	586	620	635	1,682
18	Princeton ISD	727	605	824	5,279
19	Fort Worth ISD	474	582	1,131	4,837
20	Waxahachie ISD	659	576	911	9,975

*Adjusted based on additional research by Templeton Demographics staff





1 - 250

251 - 500

501 - 1,000

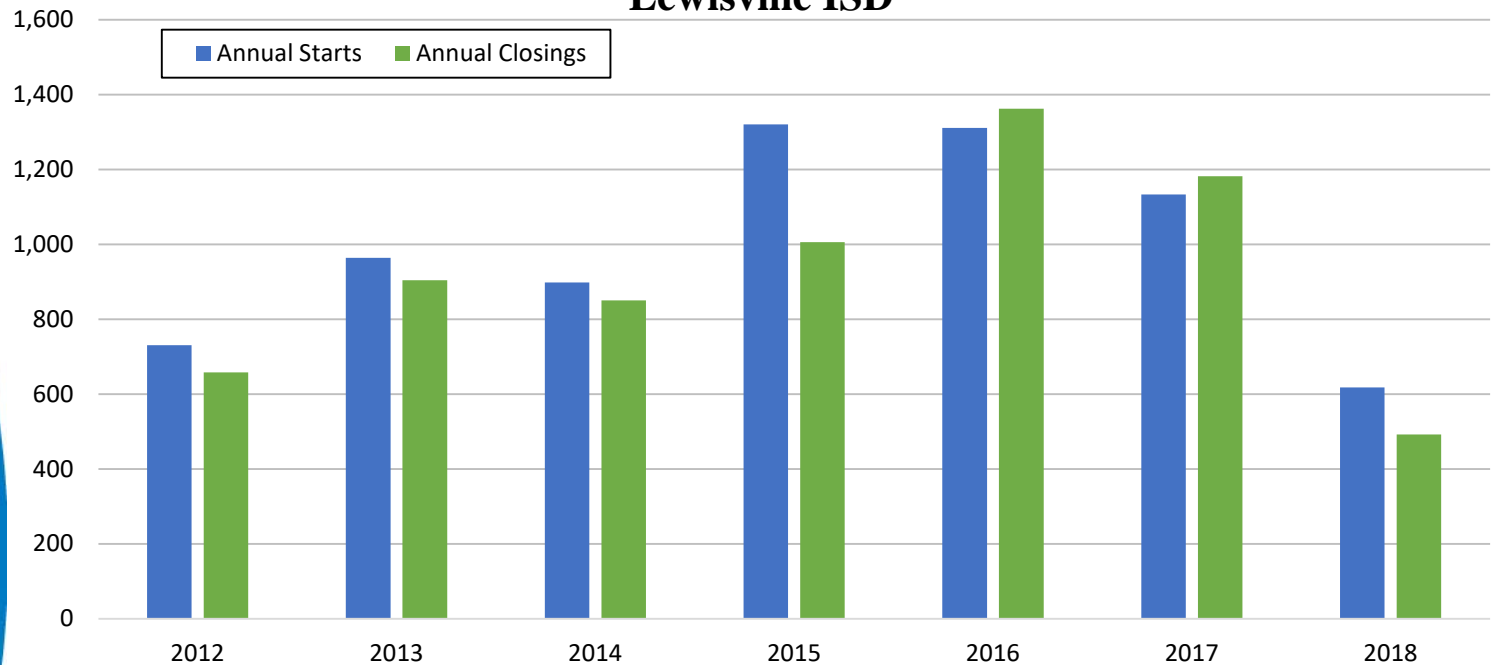
1,001 - 1,500

Red > 1,500



New Housing Activity

Lewisville ISD



Starts	2012	2013	2014	2015	2016	2017	2018
1Q	131	223	188	284	338	286	252
2Q	189	273	254	281	313	284	366
3Q	190	225	262	428	400	301	
4Q	221	243	194	327	260	262	
Total	731	964	898	1,320	1,311	1,133	618

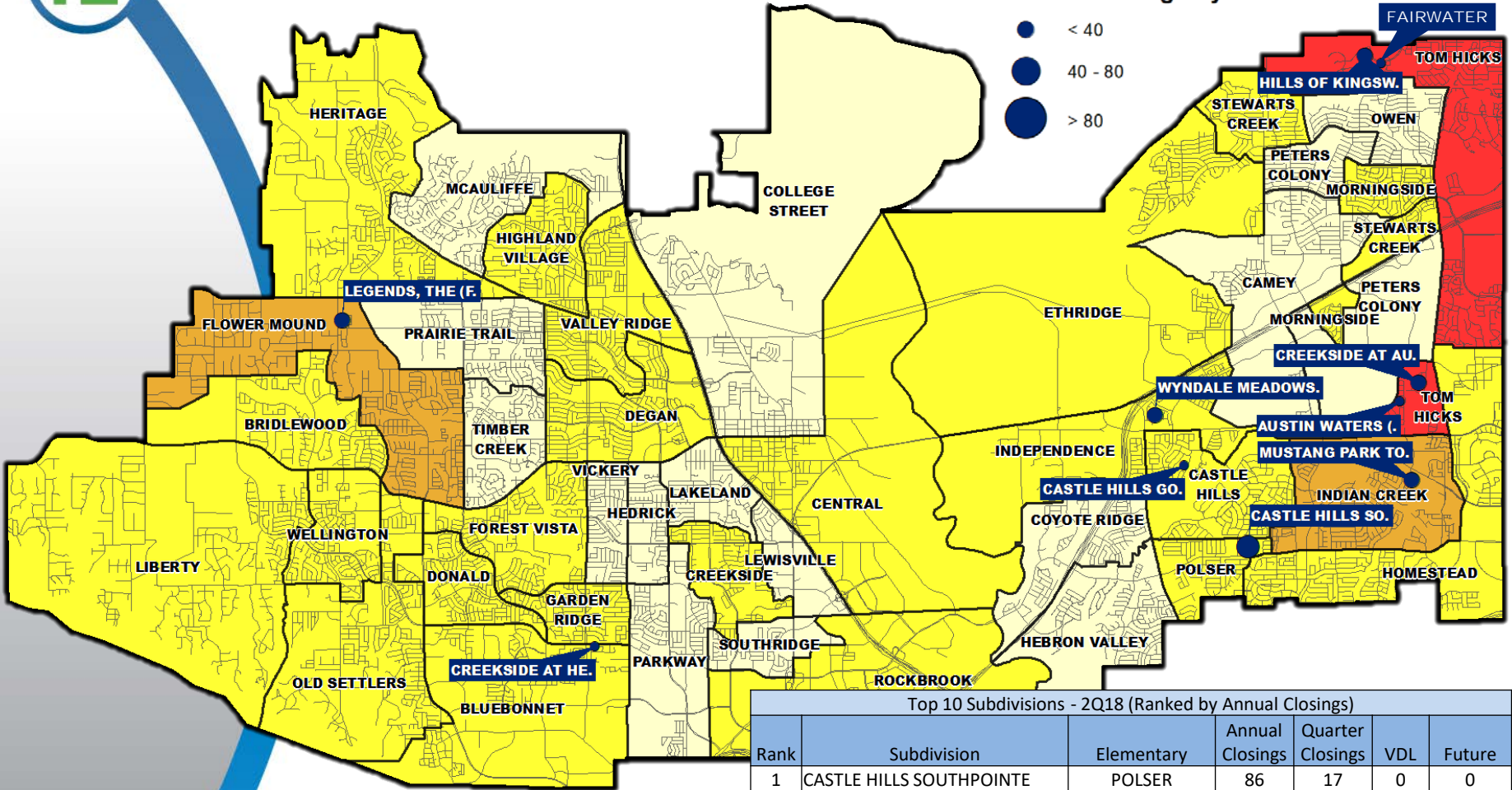
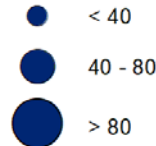
Closings	2012	2013	2014	2015	2016	2017	2018
1Q	133	222	159	182	356	340	185
2Q	191	245	205	244	304	304	307
3Q	173	204	228	305	362	295	
4Q	161	233	258	275	340	243	
Total	658	904	850	1,006	1,362	1,182	492

- LISD posted the highest quarterly starts total since the 3rd quarter of 2016, and the district is on pace to start more than 1,100 homes in 2018
- The number of district closings increased 65% over 1Q18, and the district is on pace to close more than 1,000 homes in 2018

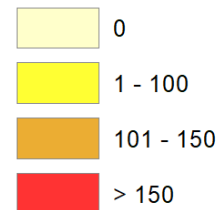


Annual Closing Distribution

Annual Closings by Sub



Annual Closings by Elem



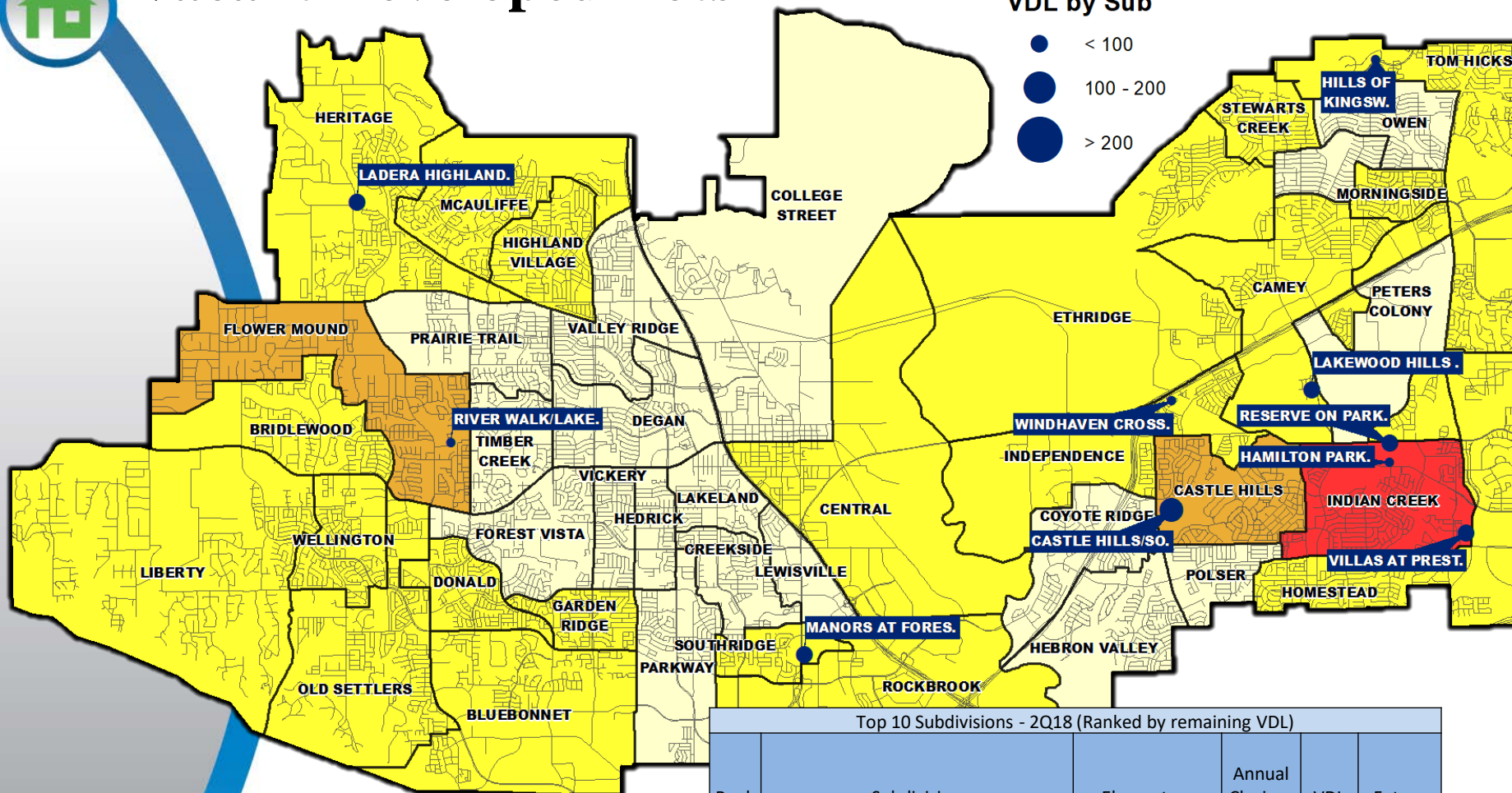
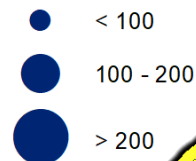
Top 10 Subdivisions - 2Q18 (Ranked by Annual Closings)

Rank	Subdivision	Elementary	Annual Closings	Quarter Closings	VDL	Future
1	CASTLE HILLS SOUTHPOINTE	POLSER	86	17	0	0
2	CREEKSIDE AT AUSTIN WATERS	TOM HICKS	57	15	30	0
3	WYNDALE MEADOWS ADDITION	INDEPENDENCE	51	2	47	0
4	MUSTANG PARK TH	INDIAN CREEK	45	13	0	0
5	THE LEGENDS	FLOWER MOUND	42	5	10	0
6	HILLS OF KINGSWOOD	TOM HICKS	41	9	67	377
7	AUSTIN WATERS	TOM HICKS	32	12	6	0
8	CREEKSIDE AT HERITAGE PARK	BLUEBONNET	28	5	41	0
9	FAIRWATER	TOM HICKS	27	7	5	0
10	VILLAS AT PRESTONWOOD	INDIAN CREEK	26	11	157	0
TOTALS			435	96	363	377

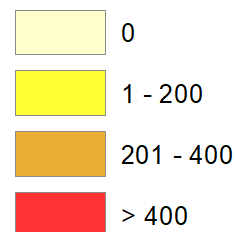


Vacant Developed Lots

VDL by Sub



VDL by Elem



Top 10 Subdivisions - 2Q18 (Ranked by remaining VDL)

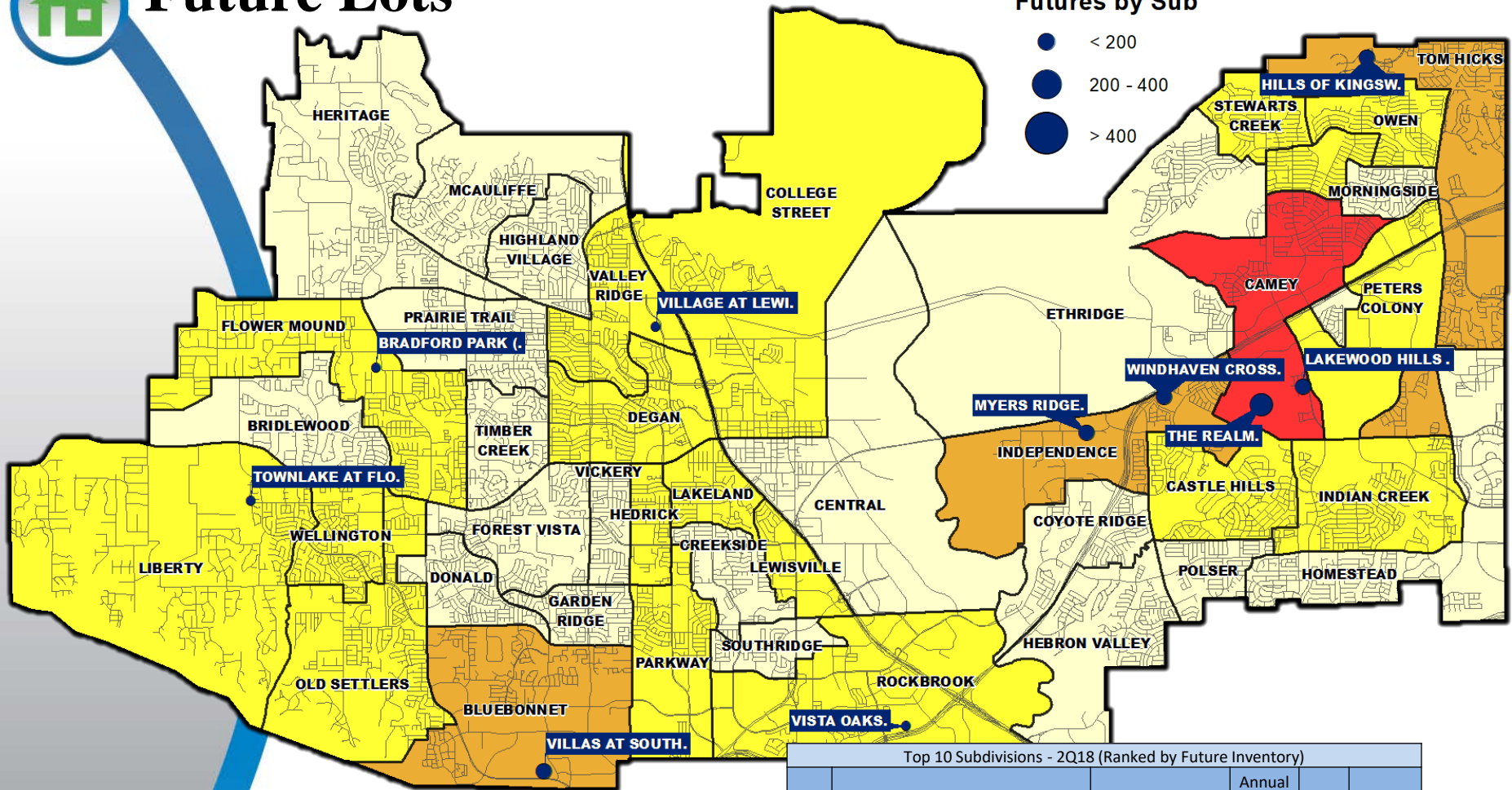
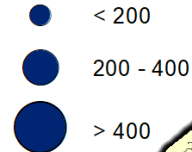
Rank	Subdivision	Elementary	Annual Closings	VDL	Future
1	CASTLE HILLS/SOUTHWEST	CASTLE HILLS	16	219	0
2	LAKEWOOD HILLS (CAMEY ELEM)	CAMEY	0	186	218
3	VILLAS AT PRESTONWOOD	INDIAN CREEK	26	157	0
4	RESERVE ON PARKER	INDIAN CREEK	1	127	0
5	MANORS AT FORESTBROOK	SOUTHRIDGE	0	111	0
6	LADERA HIGHLAND VILLAGE	AGE RESTRICTED	0	102	0
7	WINDHAVEN CROSSING TH	INDEPENDENCE	19	84	217
8	RIVER WALK/LAKESHORE TERRACE TH	FLOWER MOUND	0	83	0
9	HAMILTON PARK	INDIAN CREEK	0	81	0
10	HILLS OF KINGSWOOD, THE	TOM HICKS	41	67	377
TOTALS			103	1,217	812



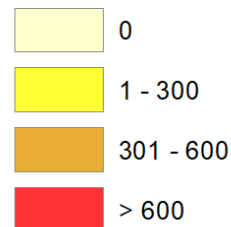


Future Lots

Futures by Sub



Futures by Elem



Top 10 Subdivisions - 2Q18 (Ranked by Future Inventory)

Rank	Subdivision	Elementary	Annual Closings	VDL	Future
1	THE REALM	CAMEY	0	0	450
2	HILLS OF KINGSWOOD	TOM HICKS	41	67	377
3	VILLAS AT SOUTHGATE	BLUEBONNET	0	0	376
4	MYERS RIDGE	INDEPENDENCE	0	0	318
5	LAKEWOOD HILLS (CAMEY ELEM)	CAMEY	0	186	218
6	WINDHAVEN CROSSING TH	INDEPENDENCE	19	84	217
7	BRADFORD PARK	FLOWER MOUND	0	0	157
8	VILLAGE AT LEWISVILLE	VALLEY RIDGE	0	0	150
9	VISTA OAKS	ROCKBROOK	0	0	148
10	TOWNLAKE AT FLOWER MOUND	LIBERTY	7	14	124
TOTALS			67	351	2,535



New Home Activity by Elementary Zone

Elementary	Annual Starts	Quarter Starts	Annual Closings	Quarter Closings	Under Const.	Inventory	Vacant Dev. Lots	Future
BLUEBONNET	62	18	38	12	31	44	103	581
BRIDLEWOOD	17	4	14	6	8	11	19	0
CAMEY	21	21	0	0	21	21	186	701
CASTLE HILLS	122	59	65	31	65	84	268	85
CENTRAL	25	2	18	7	16	19	63	0
COLLEGE STREET	5	0	0	0	5	5	0	97
CREEKSIDE	0	0	6	0	0	0	0	0
DEGAN	11	0	19	4	1	6	0	82
DONALD	7	1	16	4	1	1	2	0
ETHRIDGE	36	0	26	8	17	31	17	0
FLOWER MOUND	167	51	117	29	76	130	288	157
FOREST VISTA	8	3	23	2	4	6	0	0
GARDEN RIDGE	14	2	17	3	7	18	59	0
HEDRICK	0	0	0	0	0	0	0	4
HERITAGE	34	15	16	4	21	27	80	0
HIGHLAND VILLAGE	7	1	22	1	2	2	9	0
HOMESTEAD	1	0	3	0	0	0	3	0
INDEPENDENCE	85	10	94	26	25	70	192	535
INDIAN CREEK	184	69	128	48	96	117	476	285
LAKELAND	0	0	0	0	0	0	0	52
LEWISVILLE	0	0	0	0	0	0	0	52
LIBERTY	63	17	30	20	27	39	63	201
MCAULIFFE	0	0	0	0	0	0	9	0
MORNINGSIDE	3	0	17	0	0	0	1	0
OLD SETTLERS	8	0	15	4	0	0	3	22
OWEN	0	0	0	0	0	0	0	43
PARKWAY	0	0	0	0	0	0	0	46
PETERS COLONY	0	0	0	0	0	0	0	101
POLSER	61	10	86	17	4	7	0	0
ROCKBROOK	60	34	46	13	40	57	31	246
SOUTHRIDGE	0	0	0	0	0	0	111	0
STEWARTS CREEK	37	11	21	19	11	16	40	74
TOM HICKS	138	38	183	47	62	91	142	391
VALLEY RIDGE	0	0	3	0	0	0	0	218
WELLINGTON	0	0	11	2	0	0	2	9
Grand Total	1,176	366	1,034	307	540	802	2,167	3,982



Highest activity in the category



Second highest activity in the category



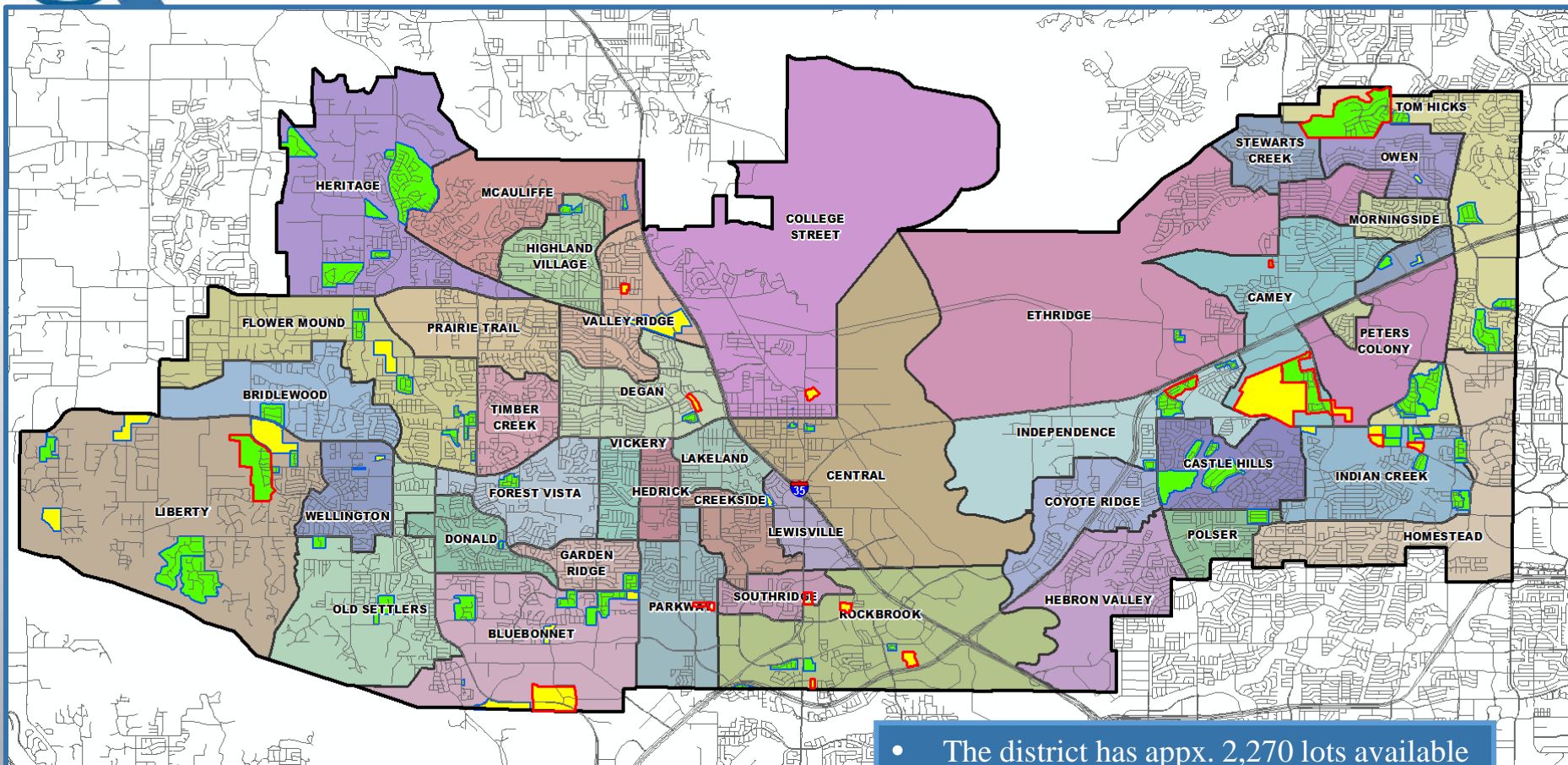
Third highest activity in the category

*Table does **NOT** include
age restricted community of
Ladera Highland Village





District Housing Overview



Active Subdivision

Future Subdivision

Groundwork Underway

- The district has appx. 2,270 lots available to build on
- LISD has nearly 4,000 future lots planned
- Groundwork is underway on appx. 1,050 lots in LISD



Residential Activity

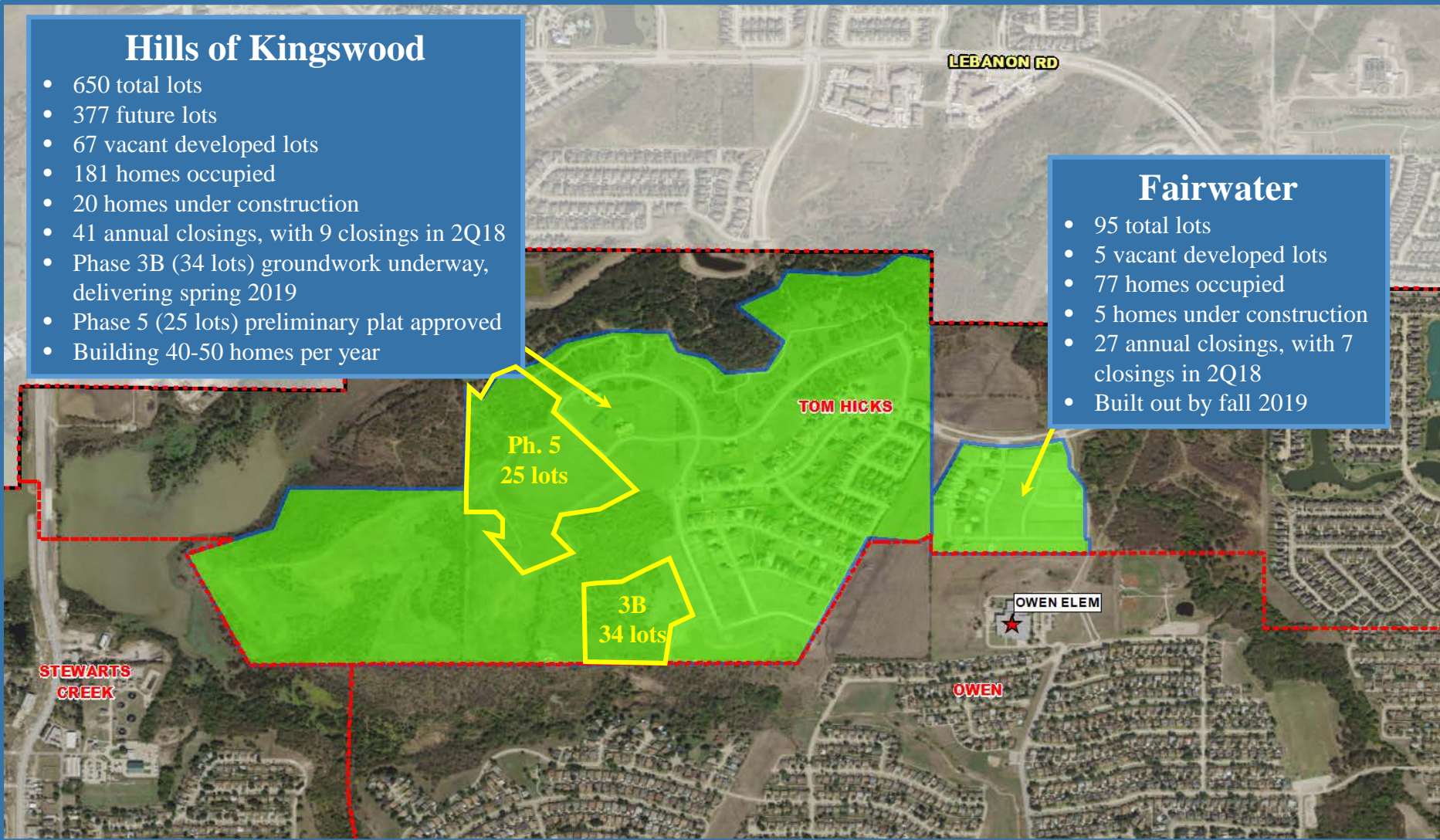
Hills of Kingswood & Fairwater

Hills of Kingswood

- 650 total lots
- 377 future lots
- 67 vacant developed lots
- 181 homes occupied
- 20 homes under construction
- 41 annual closings, with 9 closings in 2Q18
- Phase 3B (34 lots) groundwork underway, delivering spring 2019
- Phase 5 (25 lots) preliminary plat approved
- Building 40-50 homes per year

Fairwater

- 95 total lots
- 5 vacant developed lots
- 77 homes occupied
- 5 homes under construction
- 27 annual closings, with 7 closings in 2Q18
- Built out by fall 2019



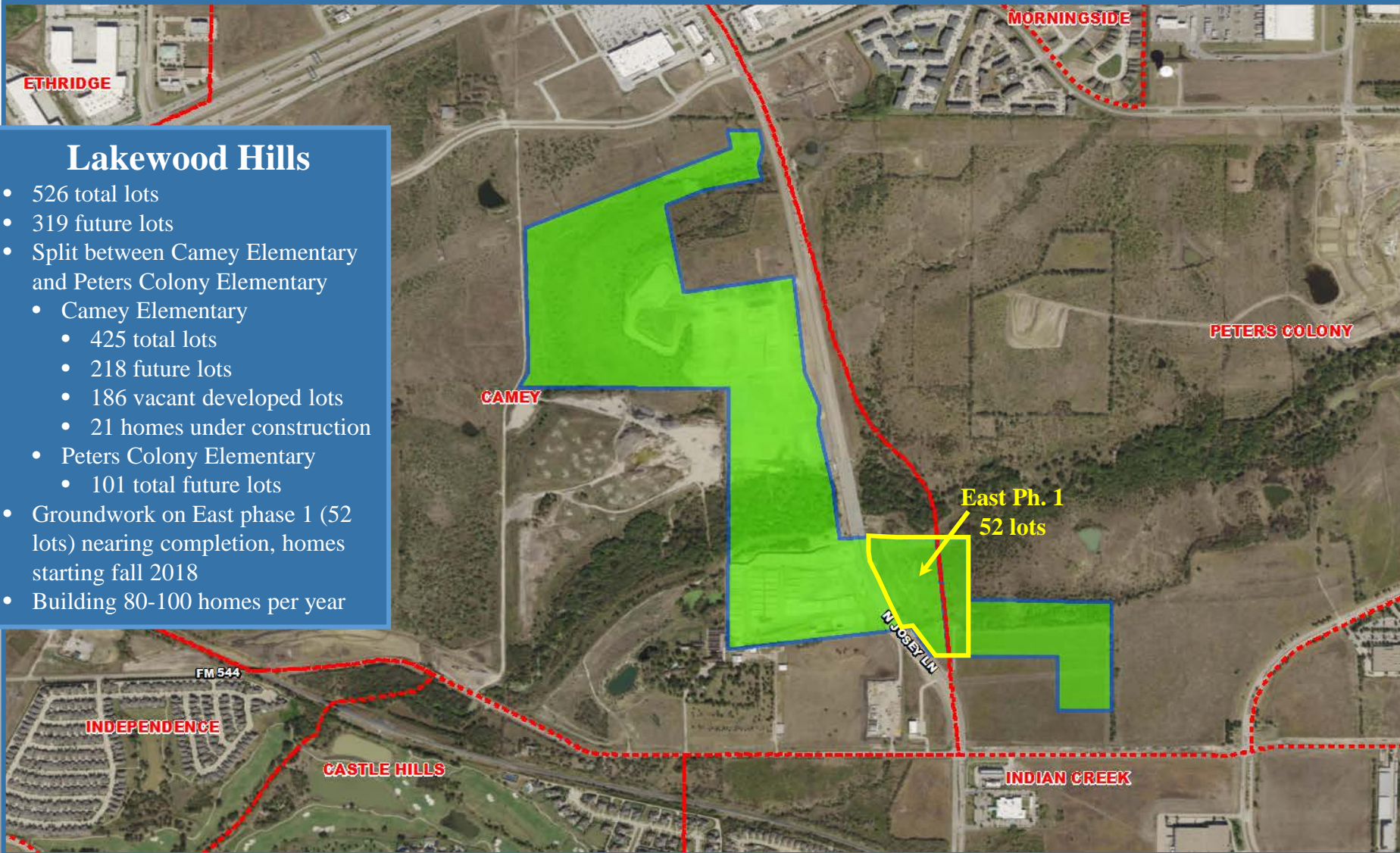


Residential Activity

Lakewood Hills

Lakewood Hills

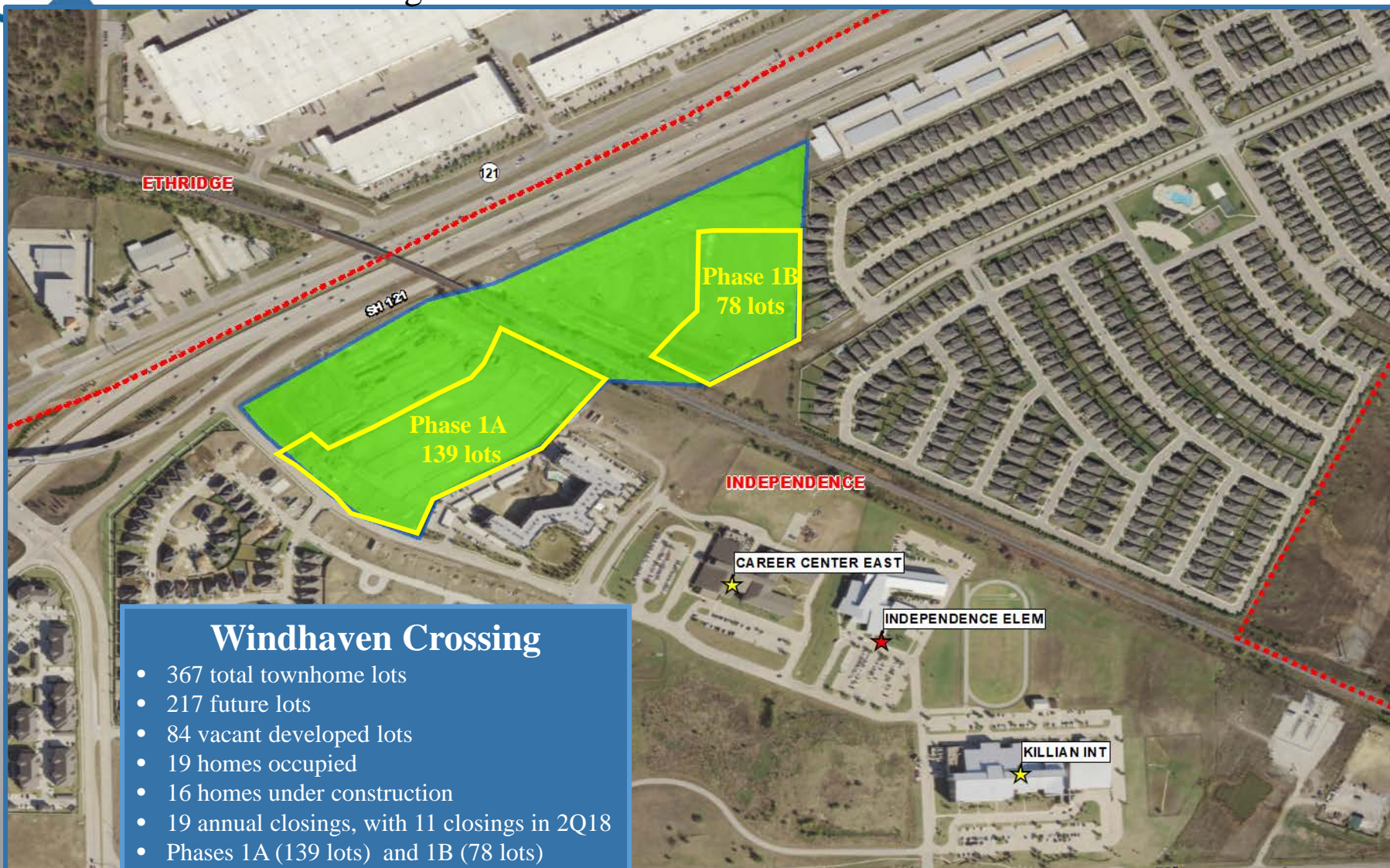
- 526 total lots
- 319 future lots
- Split between Camey Elementary and Peters Colony Elementary
 - Camey Elementary
 - 425 total lots
 - 218 future lots
 - 186 vacant developed lots
 - 21 homes under construction
 - Peters Colony Elementary
 - 101 total future lots
- Groundwork on East phase 1 (52 lots) nearing completion, homes starting fall 2018
- Building 80-100 homes per year





Residential Activity

Windhaven Crossing Townhomes



Windhaven Crossing

- 367 total townhome lots
- 217 future lots
- 84 vacant developed lots
- 19 homes occupied
- 16 homes under construction
- 19 annual closings, with 11 closings in 2Q18
- Phases 1A (139 lots) and 1B (78 lots) groundwork underway, delivering mid 2019
- Building 45-55 homes per year



Future Residential Activity

Bradford Park

Bradford Park

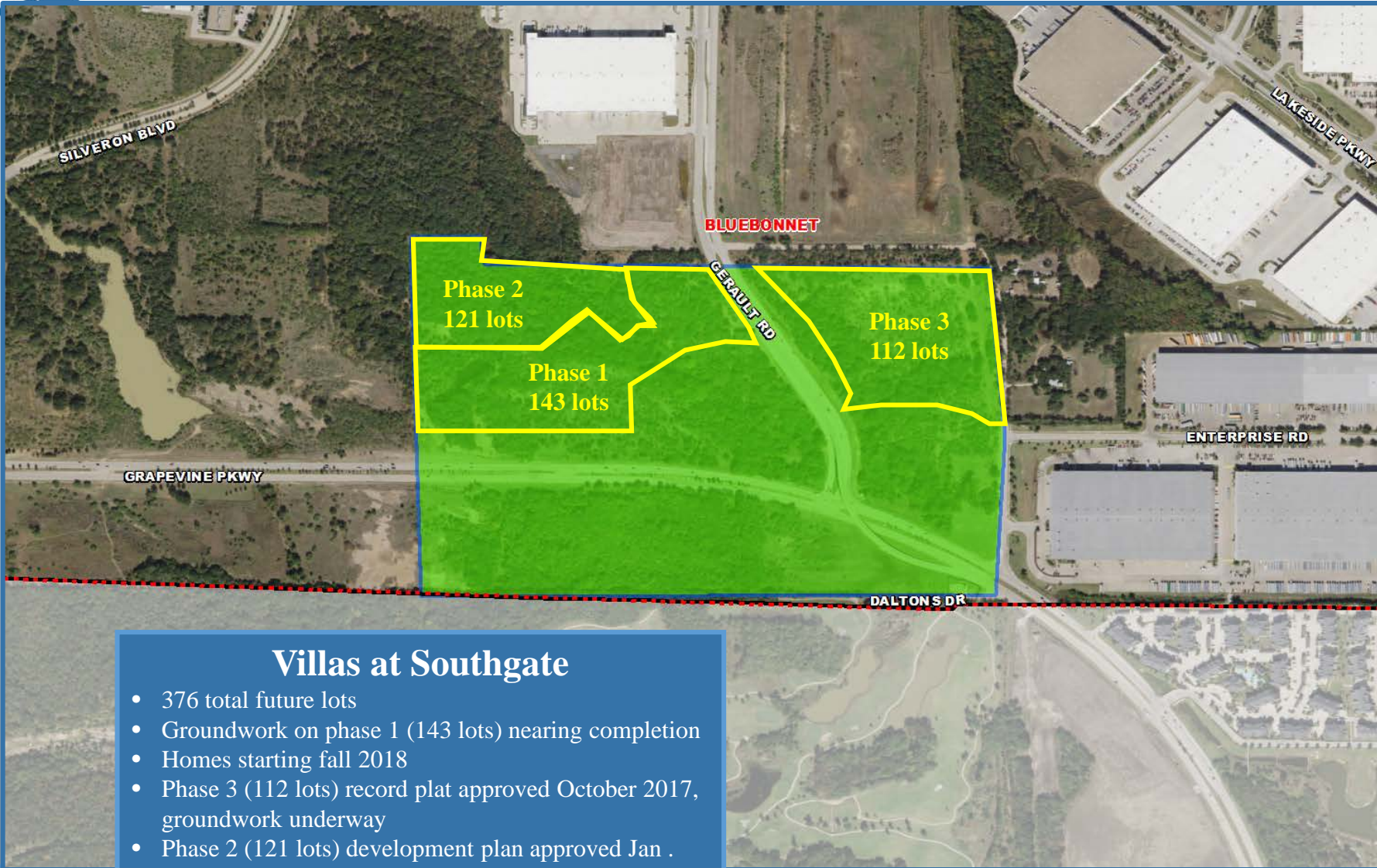
- 157 total future lots
- Phase 1 (87 lots) groundwork nearing completion
- Homes starting end 2018
- Phase 2 (70 lots) groundwork underway
- Building appx. 50 homes per year





Future Residential Activity

Villas at Southgate



Villas at Southgate

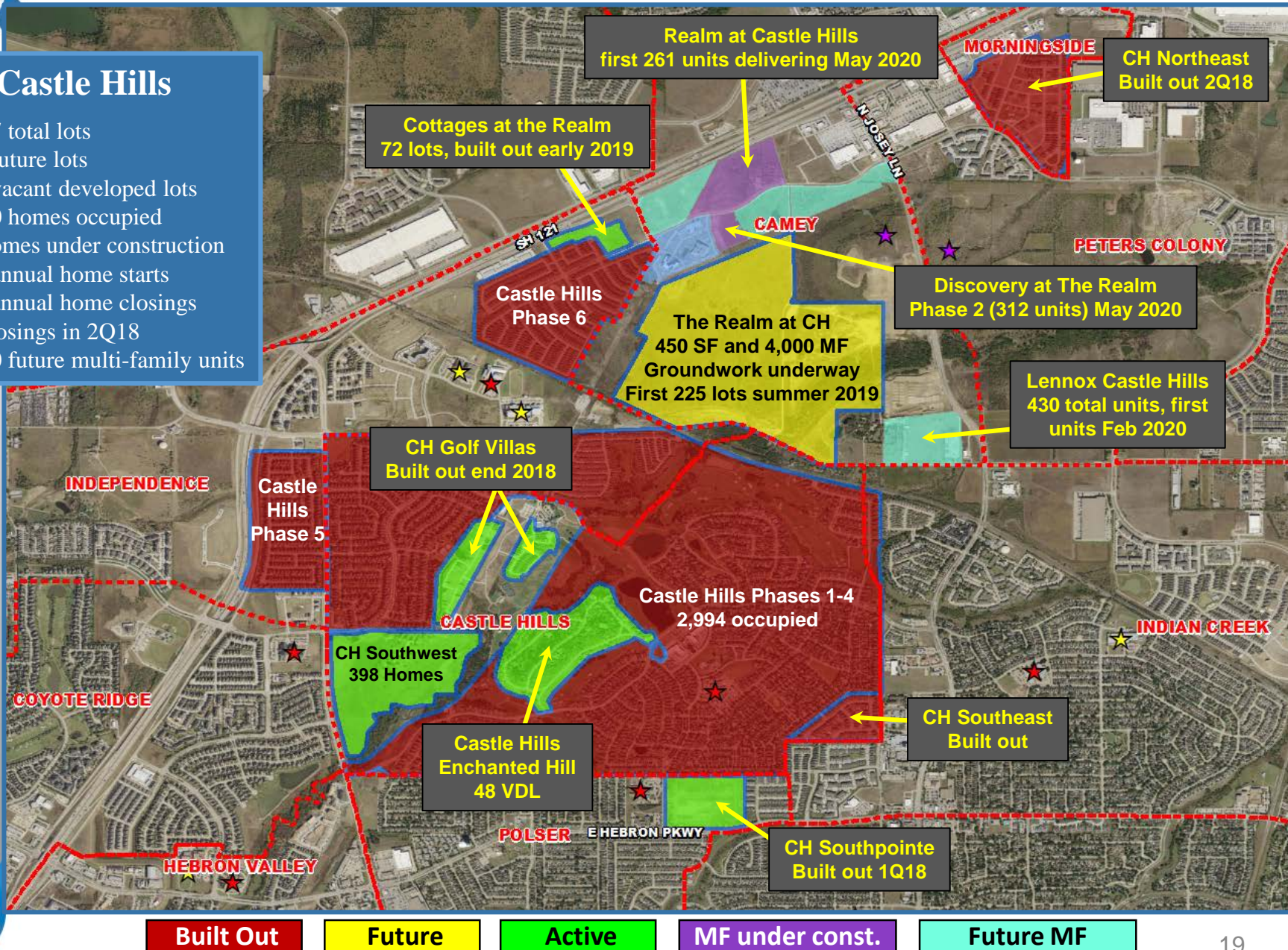
- 376 total future lots
- Groundwork on phase 1 (143 lots) nearing completion
- Homes starting fall 2018
- Phase 3 (112 lots) record plat approved October 2017, groundwork underway
- Phase 2 (121 lots) development plan approved Jan . 2018, initial groundwork underway
- Developer anticipates building 70-80 homes per year



Castle Hills Housing Overview

Castle Hills

- 4,477 total lots
- 535 future lots
- 316 vacant developed lots
- 3,440 homes occupied
- 72 homes under construction
- 207 annual home starts
- 160 annual home closings
- 56 closings in 2Q18
- 4,700 future multi-family units





Castle Hills Housing Overview by Zone

Section	STATUS	Elementary	Intermediate	High	Annual Starts	Annual Closings	Occupied	Under Construction	VDL	Future	Total
THE REALM AT CASTLE HILLS	Future	CAMEY	LAKEVIEW	THE COLONY	0	0	0	0	0	450	450

Section	STATUS	Elementary	Intermediate	High	Annual Starts	Annual Closings	Occupied	Under Construction	VDL	Future	Total
CASTLE HILLS	Active	CASTLE HILLS	KILLIAN	HEBRON	0	4	2,994	0	1	0	2,995
CASTLE HILLS ENCHANTED HILL	Active	CASTLE HILLS	KILLIAN	HEBRON	1	4	51	0	48	0	100
CASTLE HILLS SOUTHEAST	Built Out	CASTLE HILLS	KILLIAN	HEBRON	0	0	80	0	0	0	80
CASTLE HILLS/SOUTHWEST	Active	CASTLE HILLS	KILLIAN	HEBRON	94	16	16	61	219	85	398
CASTLE HILLS/RETREAT	Built Out	CASTLE HILLS	KILLIAN	HEBRON	0	0	20	0	0	0	20
CASTLE HILLS/CHATEAUX AT THE SHOPS	Built Out	CASTLE HILLS	KILLIAN	HEBRON	10	19	19	0	0	0	19
CASTLE HILLS/GOLF VILLAS	Active	CASTLE HILLS	KILLIAN	HEBRON	17	26	153	4	0	0	158
CASTLE HILLS/VILLAGE TOWNHOMES	Built Out	CASTLE HILLS	KILLIAN	HEBRON	0	0	8	0	0	0	8
Castle Hills Elementary Totals					122	65	3,261	65	268	85	3,778

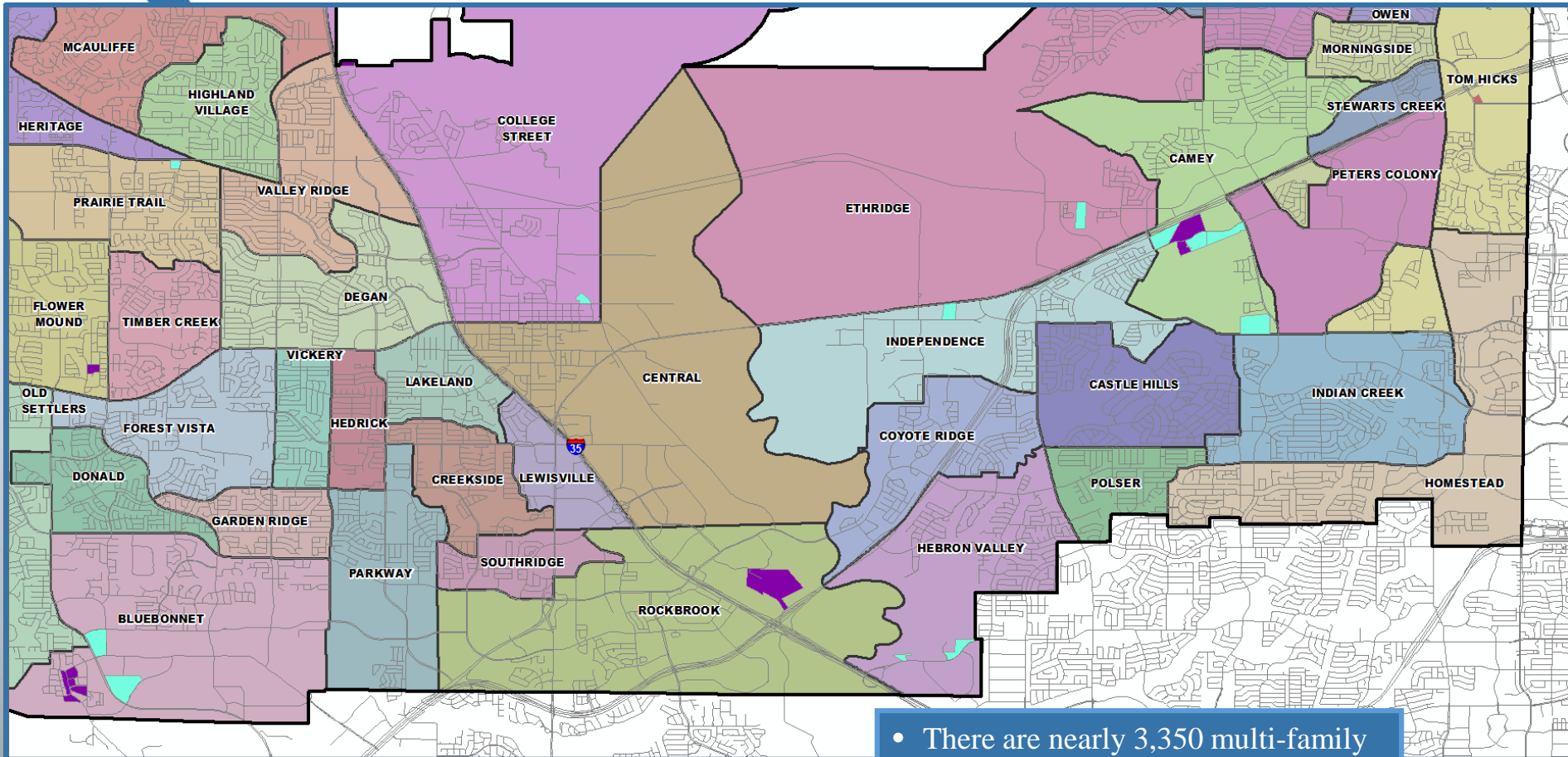
Section	STATUS	Elementary	Intermediate	High	Annual Starts	Annual Closings	Occupied	Under Construction	VDL	Future	Total
COTTAGES AT THE REALM	Future	INDEPENDENCE	KILLIAN	HEBRON	24	9	9	3	48	0	72
CASTLE HILLS PHASES 5 & 6	Built Out	INDEPENDENCE	KILLIAN	HEBRON	0	0	873	0	0	0	873
Independence Elementary Totals					24	9	882	3	48	72	945

Section	STATUS	Elementary	Intermediate	High	Annual Starts	Annual Closings	Occupied	Under Construction	VDL	Future	Total
CASTLE HILLS NORTHEAST	Built Out	MORNINGSIDE	GRIFFIN	THE COLONY	3	17	378	0	1	0	379
Section	STATUS	Elementary	Intermediate	High	Annual Starts	Annual Closings	Occupied	Under Construction	VDL	Future	Total
CASTLE HILLS SOUTHPOINTE	Active	POLSER	CREEK VALLEY	HEBRON	61	86	170	4	0	0	177





Multi-Family District Overview



- There are nearly 3,350 multi-family units under construction within LISD
- The district has appx. 7,800 future multi-family units planned





Multi-Family Activity

Hebron 121 Station



Hebron 121 Station

- 1,821 total units
- 391 future units planned
- Phase 5 (272 units) under construction, first units available Sept. 2018
- Phase 6 (385 units) final plat approved May 2018, construction not yet started



Future Multi-Family Activity

The Point



The Point

- Future mixed use development
- 585 future multi-family units
- Final plat under review
- Groundwork on phase 1 (360 units) starting late 2018 or early 2019
- First units available May 2020





Residential Yield Analysis

	2013-14	2014-15	2015-16	2016-17	2017-18	4 Yr Change
Total Students	52,748	53,165	53,458	53,149	52,192	-556
Out of District	395	505	421	396	439	44
Unmatched	409	54	194	142	41	-368
Total Students (Geocoded Inside District)	51,944	52,606	52,843	52,611	51,712	-232
Multi-Family						
Students in MF	9,601	11,386	11,892	12,135	12,206	2,605
MF Units	34,686	36,696	37,294	37,719	39,799	5,113
% Students in MF	18.48%	21.64%	22.50%	23.06%	23.60%	5.12%
MF Yield	0.277	0.310	0.319	0.322	0.307	0.03
Single Family						
Students in SF	42,343	41,220	40,951	40,476	39,506	-2,837
SF Parcels	78,214	79,038	80,026	81,305	82,572	4,358
% Students in SF	81.52%	78.36%	77.50%	76.93%	76.40%	-5.12%
SF Yield	0.541	0.522	0.512	0.498	0.478	-0.063

- Since 2013/14, Lewisville ISD has added 2,605 students in multi-family units, causing a rise in existing multi-family yields
- Roughly 76.4% of district students reside in single family homes, a more than 5% decline since 2013/14
- Between 2016/17 and 2017/18 both single family and multi-family yields declined within the district

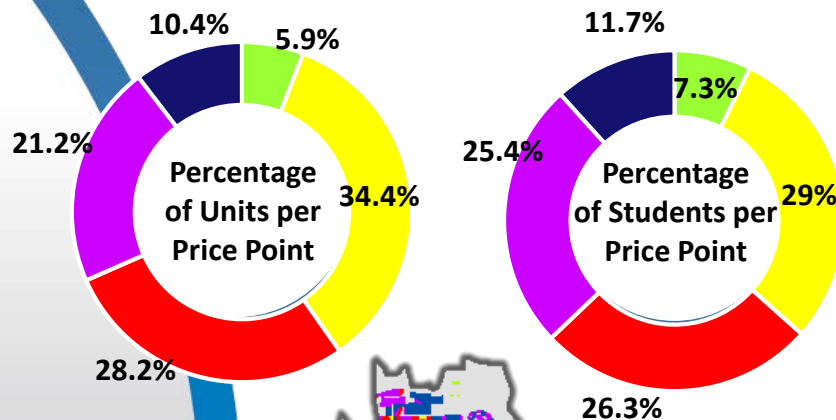


Multi-Family figures include Manufactured Home communities

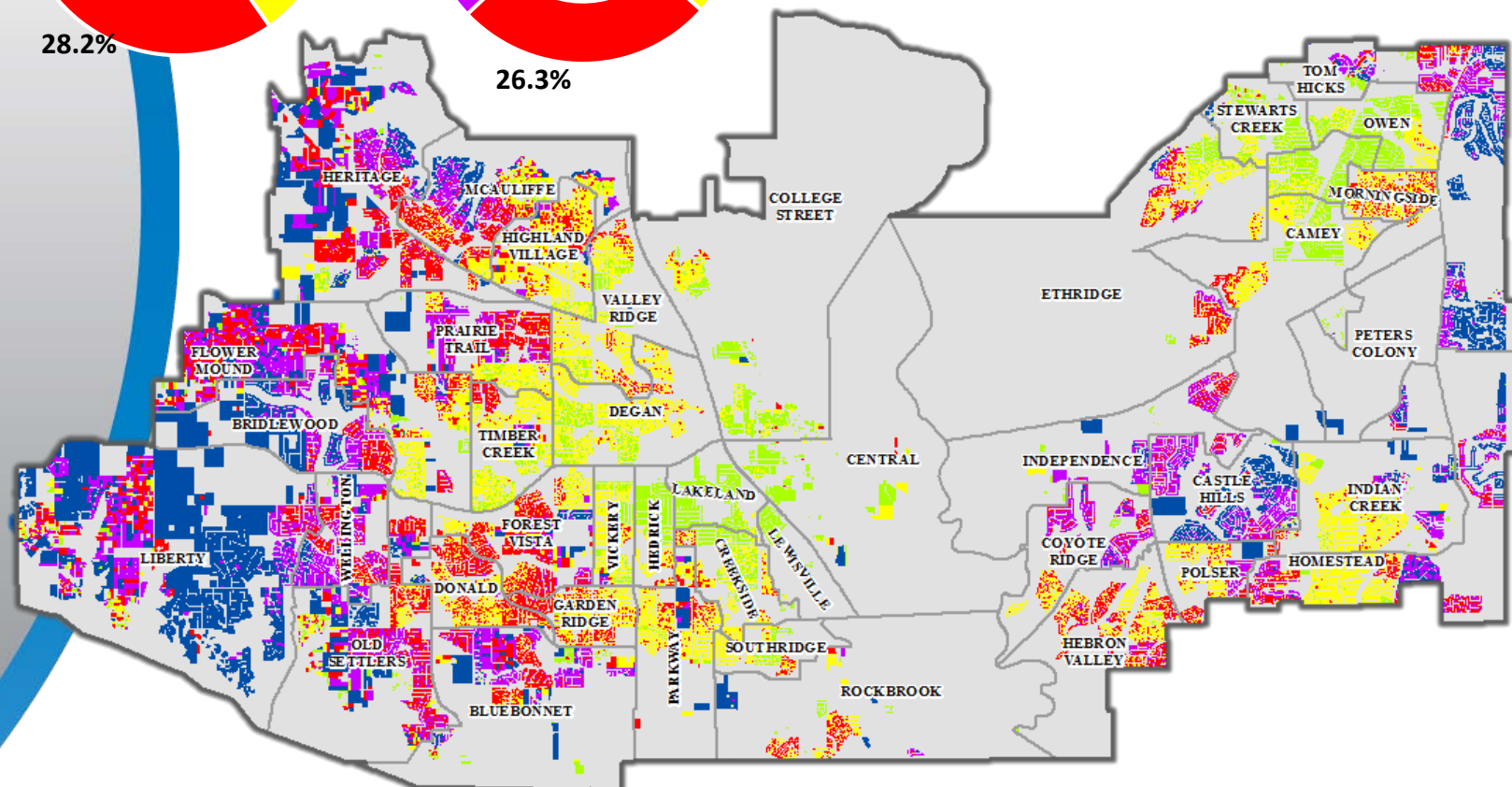


2017 County Appraisal Values

Appraisal Values Map and Average Student Yield by Price Point



Legend	Appraisal Values	Units	% of Total Units	Total Students	Total Yield	% of Total Stud.
	< \$150K	4,848	5.9%	3,091	0.638	7.3%
	\$150K - \$250K	28,363	34.4%	12,359	0.436	29%
	\$250K - \$350K	23,248	28.2%	11,108	0.478	26.3%
	\$350K - \$500K	17,459	21.2%	10,735	0.615	25.4%
	> \$500K	8,594	10.4%	4,931	0.574	11.7%
Grand Total		82,512		42,224	0.512	



Source: Tarrant and Denton County Appraisal District & Templeton Demographics
Based on students geocoded to Single Family parcels with verified addresses



Ten Year Forecast

By Grade Level

Year (OCT)	EE/PK	K	1st	2nd	3rd	4th	5th	6th	7th	8th	9th	10th	11th	12th	Totals	Total Growth	% Growth
2013/14	1,695	3,493	3,752	3,782	3,918	3,906	4,008	4,020	4,118	4,189	4,275	4,044	3,925	3,676	52,801		
2014/15	1,853	3,405	3,643	3,786	3,864	3,978	3,987	4,064	4,124	4,181	4,400	4,225	4,047	3,799	53,356	555	1.1%
2015/16	1,810	3,358	3,570	3,612	3,834	3,890	4,059	4,049	4,115	4,210	4,465	4,364	4,159	3,995	53,490	134	0.3%
2016/17	1,804	3,374	3,441	3,671	3,589	3,812	3,941	4,055	4,127	4,181	4,486	4,391	4,296	4,089	53,257	-233	-0.4%
2017/18	1,737	3,292	3,396	3,458	3,694	3,623	3,823	3,906	4,064	4,168	4,373	4,341	4,303	4,179	52,357	-900	-1.7%
2018/19	1,737	3,334	3,344	3,425	3,473	3,710	3,647	3,827	3,943	4,122	4,378	4,274	4,286	4,237	51,737	-620	-1.2%
2019/20	1,737	3,489	3,429	3,366	3,452	3,486	3,738	3,673	3,880	4,030	4,343	4,314	4,224	4,188	51,347	-390	-0.8%
2020/21	1,737	3,388	3,585	3,474	3,404	3,486	3,503	3,816	3,713	3,910	4,237	4,270	4,262	4,141	50,927	-421	-0.8%
2021/22	1,737	3,418	3,482	3,621	3,499	3,427	3,520	3,560	3,858	3,765	4,139	4,148	4,215	4,173	50,563	-364	-0.7%
2022/23	1,737	3,438	3,524	3,531	3,669	3,531	3,487	3,575	3,651	3,929	3,987	4,060	4,098	4,130	50,347	-216	-0.4%
2023/24	1,737	3,514	3,546	3,575	3,576	3,701	3,591	3,561	3,634	3,706	4,156	3,910	4,009	4,012	50,227	-119	-0.2%
2024/25	1,737	3,517	3,624	3,601	3,620	3,601	3,775	3,686	3,641	3,687	3,919	4,069	3,863	3,922	50,262	35	0.1%
2025/26	1,737	3,542	3,626	3,679	3,647	3,652	3,659	3,867	3,777	3,704	3,902	3,845	4,017	3,783	50,437	175	0.3%
2026/27	1,737	3,572	3,651	3,680	3,732	3,677	3,718	3,747	3,970	3,829	3,924	3,826	3,797	3,930	50,790	353	0.7%
2027/28	1,737	3,590	3,686	3,705	3,728	3,767	3,743	3,701	3,849	4,019	4,055	3,843	3,780	3,718	50,921	131	0.3%

*Yellow box = largest grade per year

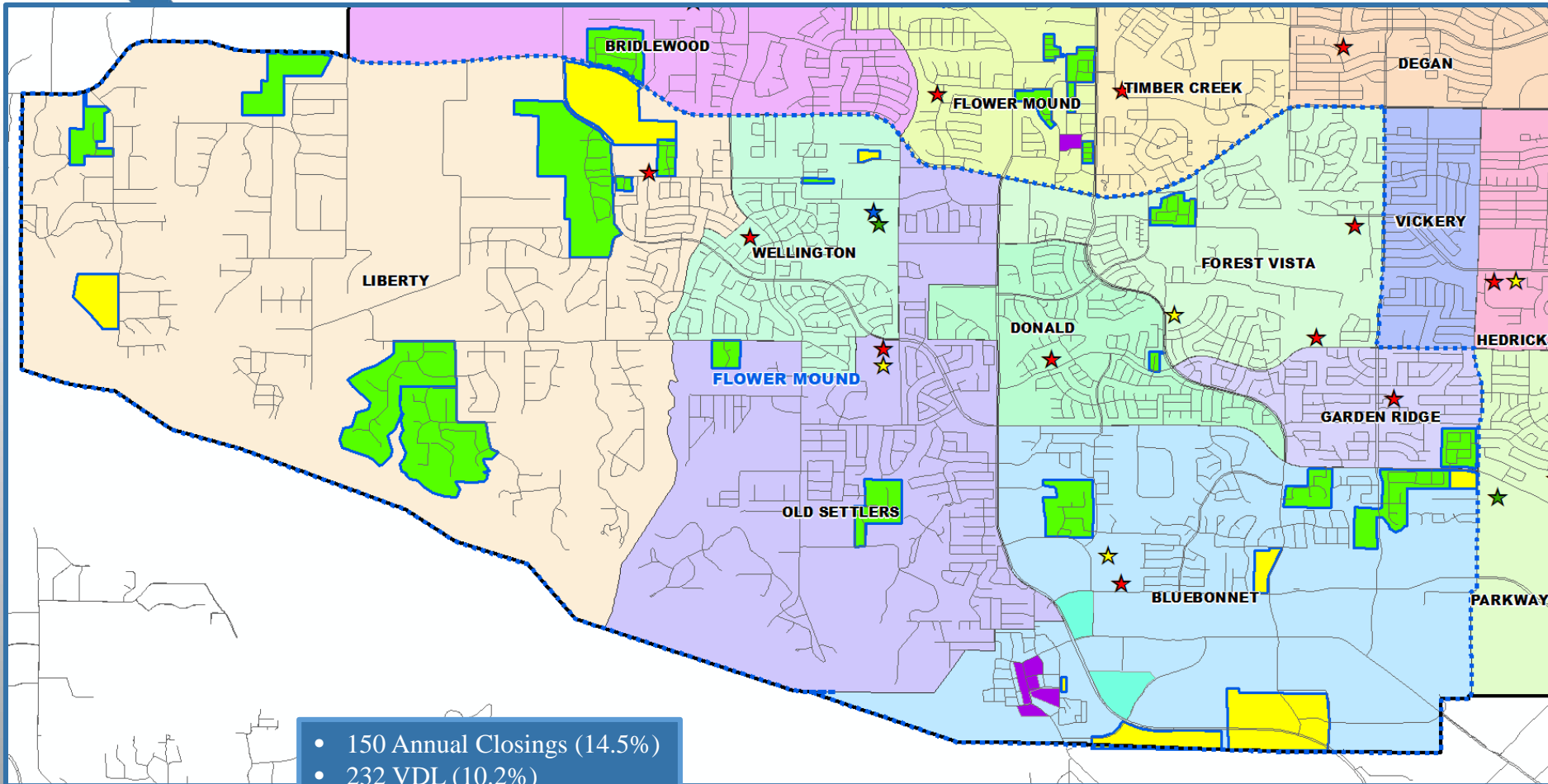
*Green box = second largest grade per year

- Lewisville ISD may see several more years of enrollment decline due to exiting classes being significantly higher than the incoming classes.
- Declining new home yields have slowed growth
- Enrollment projected to be 50,347 students in 5 years (2022/23)
- 2027/28 enrollment projected to be 50,921





Flower Mound High School Zone



- 150 Annual Closings (14.5%)
- 232 VDL (10.2%)
- 813 Futures (20.4%)





Vertical Zones- Ten Year Forecast

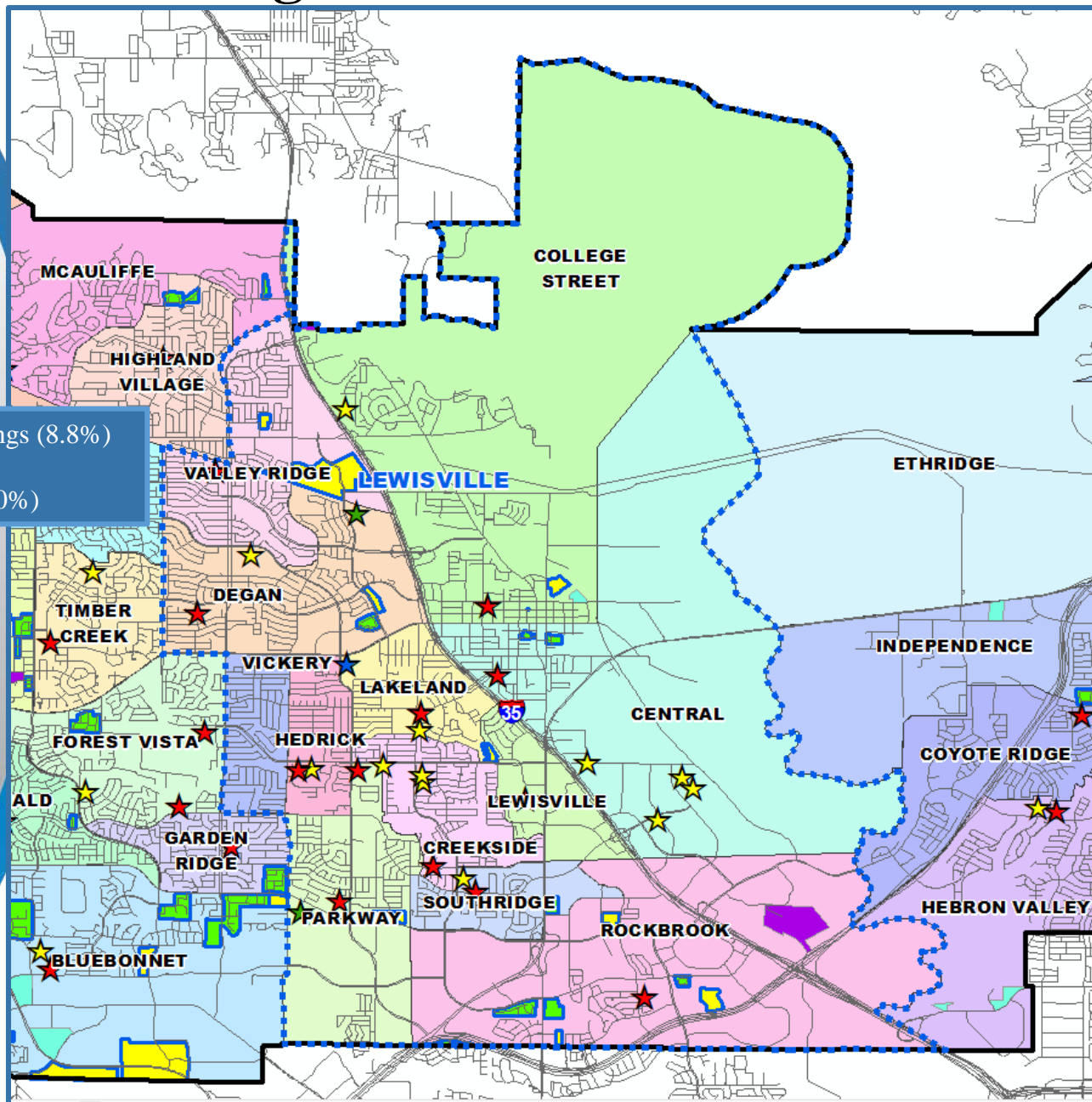
Flower Mound High School

CAMPUS	Optimal Capacity	History	Current	ENROLLMENT PROJECTIONS									
		2016/17	2017/18	2018/19	2019/20	2020/21	2021/22	2022/23	2023/24	2024/25	2025/26	2026/27	2027/28
BLUEBONNET ELEMENTARY	535	549	508	513	545	568	598	622	647	664	674	683	686
DONALD ELEMENTARY	752	470	472	457	437	431	420	420	424	428	434	443	455
FOREST VISTA ELEMENTARY	832	498	491	483	475	487	490	485	487	493	490	493	496
GARDEN RIDGE ELEMENTARY	515	403	377	359	348	336	315	314	327	333	336	344	353
LIBERTY ELEMENTARY	851	559	515	462	450	440	438	449	481	510	525	544	557
OLD SETTLERS ELEMENTARY	871	574	564	544	542	541	543	532	538	549	550	555	560
WELLINGTON ELEMENTARY	851	906	907	900	901	896	890	897	905	910	897	900	905
ELEMENTARY TOTALS	4,672	3,959	3,834	3,718	3,698	3,699	3,694	3,719	3,809	3,887	3,906	3,962	4,012
Elementary Total Change		-111	-125	-116	-20	1	-5	25	90	78	19	56	50
Elementary Percent Change		-2.73%	-3.16%	-3.03%	-0.54%	0.03%	-0.14%	0.68%	2.42%	2.05%	0.49%	1.43%	1.26%
FORESTWOOD MIDDLE SCHOOL	1,079	866	914	871	814	733	729	714	695	667	664	671	678
MCKAMY MIDDLE SCHOOL	910	1,015	941	879	854	824	821	806	775	757	778	800	774
SHADOW RIDGE MIDDLE SCHOOL	867	699	721	678	667	605	593	596	606	619	638	668	626
MIDDLE SCHOOL TOTALS	2,856	2,580	2,576	2,428	2,335	2,162	2,143	2,116	2,076	2,043	2,080	2,139	2,078
Middle School Total Change		23	-4	-148	-93	-173	-19	-27	-40	-33	37	59	-61
Middle School Percent Change		0.90%	-0.16%	-5.75%	-3.83%	-7.41%	-0.88%	-1.26%	-1.89%	-1.59%	1.81%	2.84%	-2.85%
FLOWER MOUND 9th GRADE CAMPUS	900	870	889	925	857	897	775	759	736	753	736	690	717
FLOWER MOUND HIGH SCHOOL	2,903	2,709	2,729	2,671	2,698	2,691	2,698	2,546	2,446	2,286	2,264	2,242	2,195
HIGH SCHOOL TOTALS	3,803	3,579	3,618	3,596	3,555	3,588	3,473	3,305	3,182	3,039	3,000	2,932	2,912
High School Total Change		38	39	-22	-41	33	-115	-168	-123	-143	-39	-68	-20
High School Percent Change		1.07%	1.09%	-0.61%	-1.14%	0.93%	-3.21%	-4.84%	-3.72%	-4.49%	-1.28%	-2.27%	-0.68%
DISTRICT TOTALS	11,331	10,131	10,028	9,742	9,588	9,449	9,310	9,140	9,067	8,969	8,986	9,033	9,002
District Total Change		-47	-103	-286	-154	-139	-139	-170	-73	-98	17	47	-31
District Percent Change		-0.46%	-1.02%	-2.85%	-1.58%	-1.45%	-1.47%	-1.83%	-0.80%	-1.08%	0.19%	0.52%	-0.34%





Lewisville High School Zone



- 92 Annual Closings (8.8%)
- 232 VDL (9.0%)
- 797 Futures (20.0%)



Vertical Zones- Ten Year Forecast

Lewisville High School

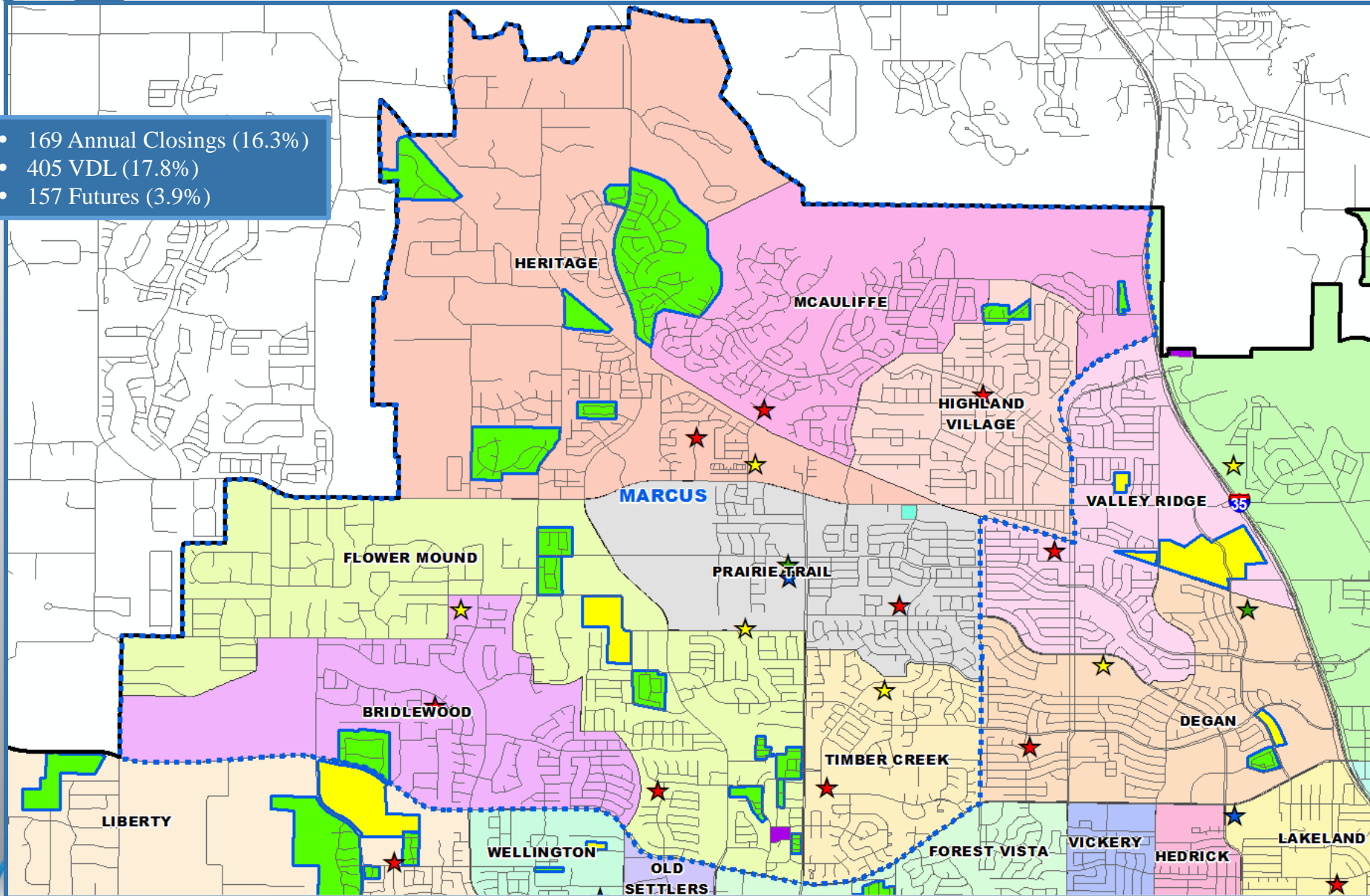
CAMPUS	Optimal Capacity	History 2016/17	Current 2017/18	ENROLLMENT PROJECTIONS									
				2018/19	2019/20	2020/21	2021/22	2022/23	2023/24	2024/25	2025/26	2026/27	2027/28
CENTRAL ELEMENTARY	1,287	968	907	887	854	823	805	793	802	802	803	813	819
COLLEGE ST. ELEMENTARY	277	218	242	233	227	227	234	242	244	241	237	236	235
CREEKSIDE ELEMENTARY	535	466	478	501	492	492	518	527	520	515	505	503	505
DEGAN ELEMENTARY	673	635	626	612	615	604	597	587	590	586	591	601	607
HEDRICK ELEMENTARY	792	616	581	575	572	559	576	578	583	579	574	579	580
LAKELAND ELEMENTARY	871	867	842	844	861	851	852	853	859	850	841	838	834
LEWISVILLE ELEMENTARY	713	798	776	783	798	804	803	804	808	811	807	813	815
PARKWAY ELEMENTARY	673	536	516	496	490	475	476	471	476	485	487	494	501
ROCKBROOK ELEMENTARY	832	753	755	751	783	782	806	802	808	814	819	817	817
SOUTHRIDGE ELEMENTARY	673	651	627	613	616	591	605	620	614	620	622	620	617
VALLEY RIDGE ELEMENTARY	832	472	469	464	471	460	451	466	476	485	496	511	525
VICKERY ELEMENTARY	634	538	489	474	454	446	448	444	446	440	444	447	447
ELEMENTARY TOTALS	8,792	7,518	7,308	7,233	7,233	7,114	7,171	7,187	7,226	7,228	7,226	7,272	7,302
Elementary Total Change		-127	-210	-75	0	-119	57	16	39	2	-2	46	30
Elementary Percent Change		-1.66%	-2.79%	-1.03%	0.00%	-1.65%	0.80%	0.22%	0.54%	0.03%	-0.03%	0.64%	0.41%
DELAY MIDDLE SCHOOL	1,015	1,003	967	988	1,063	1,117	1,132	1,143	1,109	1,118	1,152	1,199	1,189
DURHAM MIDDLE SCHOOL	846	895	871	858	841	868	841	828	819	855	883	875	881
HEDRICK MIDDLE SCHOOL	867	691	668	698	733	774	719	718	694	738	744	741	733
HUFFINES MIDDLE SCHOOL	867	853	827	801	740	721	712	748	711	725	728	721	714
MIDDLE SCHOOL TOTALS	3,595	3,442	3,333	3,345	3,377	3,480	3,404	3,437	3,333	3,436	3,507	3,536	3,517
Middle School Total Change		100	-109	12	32	103	-76	33	-104	103	71	29	-19
Middle School Percent Change		2.99%	-3.17%	0.36%	0.96%	3.05%	-2.18%	0.97%	-3.03%	3.09%	2.07%	0.83%	-0.54%
LEWISVILLE HIGH SCHOOL	2,115	2,061	2,178	2,229	2,255	2,271	2,247	2,235	2,249	2,266	2,380	2,333	2,228
LEWISVILLE BEN HARMON HS	1,148	1,307	1,362	1,392	1,351	1,338	1,376	1,409	1,483	1,421	1,345	1,418	1,470
LEWISVILLE KILLOUGH	1,193	1,066	1,024	1,012	1,029	1,027	1,004	990	1,036	1,049	1,015	1,006	1,029
HIGH SCHOOL TOTALS	4,456	4,434	4,564	4,633	4,635	4,636	4,627	4,634	4,768	4,736	4,740	4,757	4,727
High School Total Change		57	130	69	2	1	-9	7	134	-32	4	17	-30
High School Percent Change		1.30%	2.93%	1.51%	0.04%	0.02%	-0.19%	0.15%	2.89%	-0.67%	0.08%	0.36%	-0.63%
DISTRICT TOTALS	16,843	15,407	15,205	15,211	15,245	15,230	15,202	15,258	15,327	15,400	15,473	15,565	15,546
District Total Change		33	-202	6	34	-15	-28	56	69	73	73	92	-19
District Percent Change		0.21%	-1.31%	0.04%	0.22%	-0.10%	-0.18%	0.37%	0.45%	0.48%	0.47%	0.59%	-0.12%





Marcus High School Zone

- 169 Annual Closings (16.3%)
- 405 VDL (17.8%)
- 157 Futures (3.9%)





Vertical Zones- Ten Year Forecast

Marcus High School

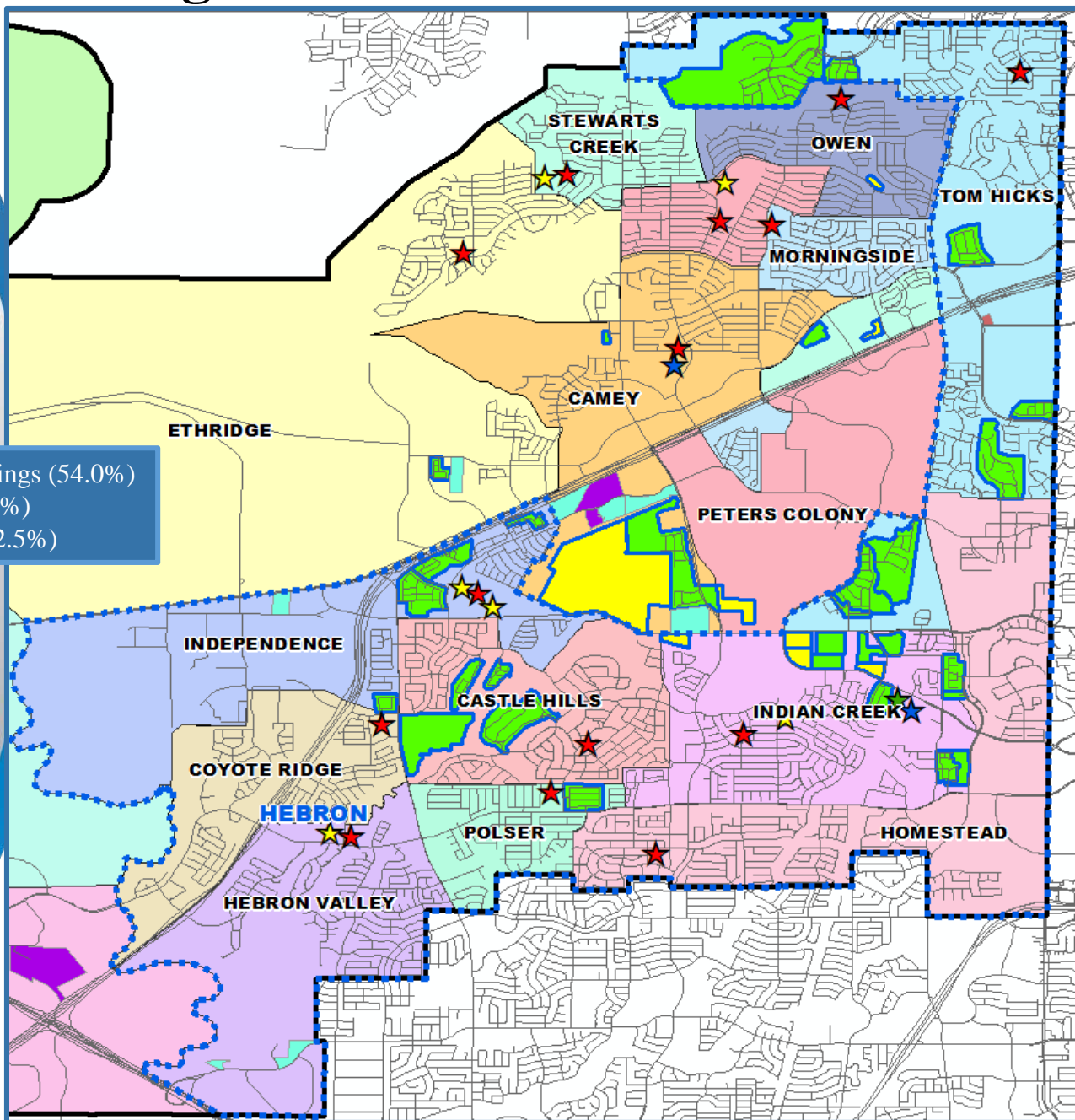
CAMPUS	Optimal Capacity	History	Current	ENROLLMENT PROJECTIONS									
		2016/17	2017/18	2018/19	2019/20	2020/21	2021/22	2022/23	2023/24	2024/25	2025/26	2026/27	2027/28
BRIDLEWOOD ELEMENTARY	792	412	398	390	398	418	441	457	460	459	459	460	466
FLOWER MOUND ELEMENTARY	574	472	469	484	505	515	539	560	551	548	536	535	529
HERITAGE ELEMENTARY	871	595	543	508	496	462	449	445	453	461	466	475	484
HIGHLAND VILLAGE ELEMENTARY	495	345	332	330	342	340	336	349	347	347	353	355	365
MCAULIFFE ELEMENTARY	614	540	537	540	545	546	543	534	532	530	522	514	516
PRAIRIE TRAIL ELEMENTARY	792	658	688	695	677	667	655	655	660	663	662	662	663
TIMBER CREEK ELEMENTARY	535	492	495	477	471	477	483	465	483	498	498	502	501
ELEMENTARY TOTALS	4,673	3,514	3,462	3,424	3,434	3,425	3,446	3,465	3,486	3,506	3,496	3,503	3,524
Elementary Total Change		-57	-52	-38	10	-9	21	19	21	20	-10	7	21
Elementary Percent Change		-1.60%	-1.48%	-1.10%	0.29%	-0.26%	0.61%	0.55%	0.61%	0.57%	-0.29%	0.20%	0.60%
BRIARHILL MIDDLE SCHOOL	909	888	865	853	795	770	740	753	706	692	698	715	713
DOWNING MIDDLE SCHOOL	846	593	546	508	440	406	374	359	392	441	481	481	482
LAMAR MIDDLE SCHOOL	888	706	718	701	704	700	709	706	685	683	691	702	724
MIDDLE SCHOOL TOTALS	2,643	2,187	2,129	2,062	1,939	1,876	1,823	1,818	1,783	1,816	1,870	1,898	1,919
Middle School Total Change		-18	-58	-67	-123	-63	-53	-5	-35	33	54	28	21
Middle School Percent Change		-0.82%	-2.65%	-3.15%	-5.97%	-3.25%	-2.83%	-0.27%	-1.93%	1.85%	2.97%	1.50%	1.11%
MARCUS 9th GRADE CAMPUS	900	824	787	739	778	724	668	644	670	612	637	643	649
MARCUS HIGH SCHOOL	2,543	2,513	2,487	2,427	2,336	2,308	2,246	2,175	2,044	1,992	1,937	1,932	1,906
HIGH SCHOOL TOTALS	3,443	3,337	3,274	3,166	3,114	3,032	2,914	2,819	2,714	2,604	2,574	2,575	2,555
High School Total Change		20	-63	-108	-52	-82	-118	-95	-105	-110	-30	1	-20
High School Percent Change		0.60%	-1.89%	-3.30%	-1.64%	-2.63%	-3.89%	-3.26%	-3.72%	-4.05%	-1.15%	0.04%	-0.78%
DISTRICT TOTALS	10,759	9,051	8,865	8,652	8,487	8,333	8,183	8,102	7,983	7,926	7,940	7,976	7,998
District Total Change		-52	-186	-213	-165	-154	-150	-81	-119	-57	14	36	22
District Percent Change		-0.57%	-2.06%	-2.40%	-1.91%	-1.81%	-1.80%	-0.99%	-1.47%	-0.71%	0.18%	0.45%	0.28%





Hebron High School Zone

- 559 Annual Closings (54.0%)
- 1,081 VDL (47.6%)
- 1,296 Futures (32.5%)





Vertical Zones- Ten Year Forecast

Hebron High School

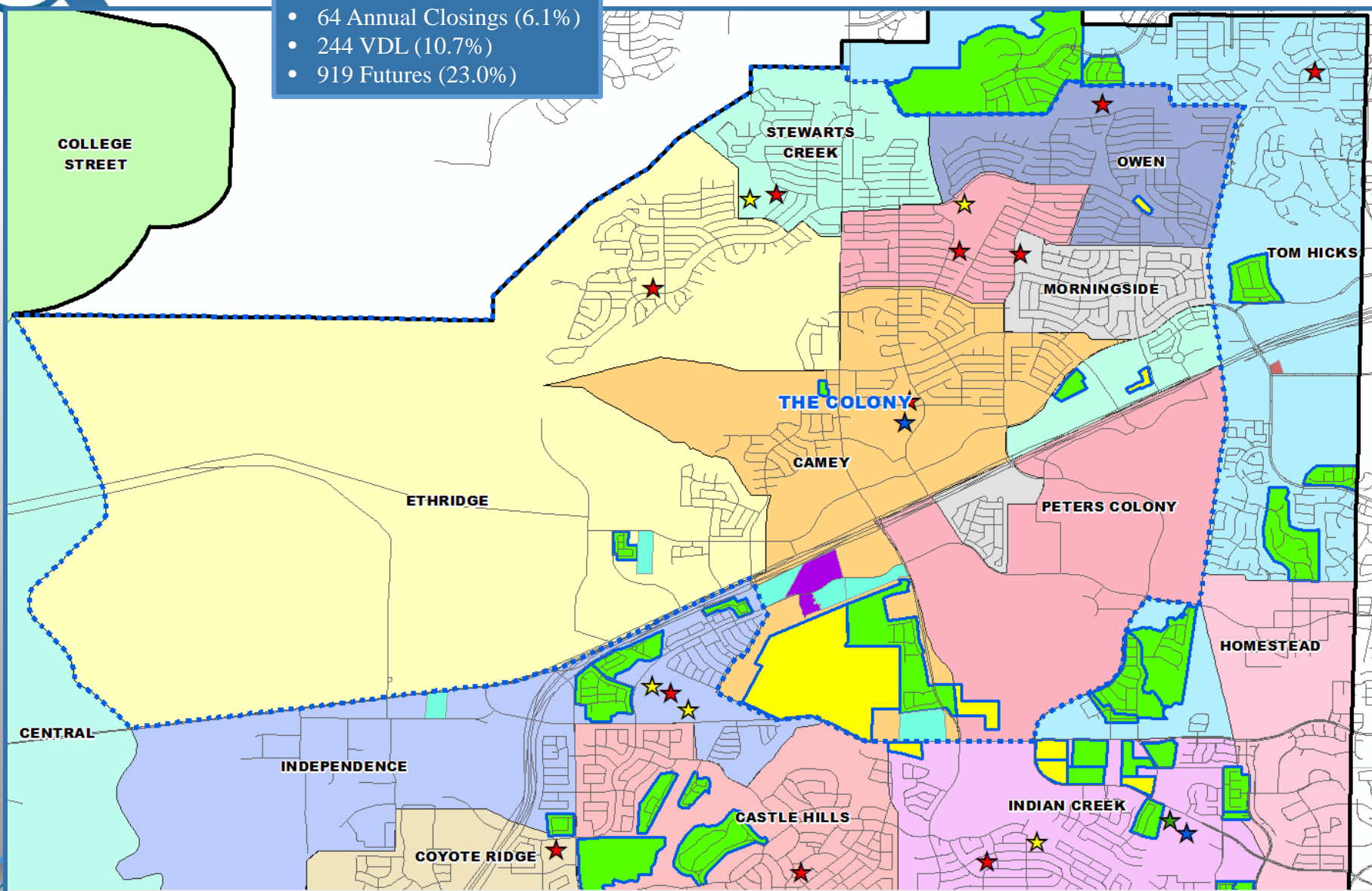
CAMPUS	Optimal Capacity	History	Current	ENROLLMENT PROJECTIONS									
		2016/17	2017/18	2018/19	2019/20	2020/21	2021/22	2022/23	2023/24	2024/25	2025/26	2026/27	2027/28
CASTLE HILLS ELEMENTARY	713	673	639	629	625	624	636	663	692	705	718	729	741
COYOTE RIDGE ELEMENTARY	673	667	684	646	647	629	618	637	647	649	645	646	642
HEBRON VALLEY ELEMENTARY	792	585	560	549	535	517	515	517	528	541	555	561	562
HICKS ELEMENTARY	673	580	594	607	620	647	658	685	680	682	667	663	671
HOMESTEAD ELEMENTARY	634	559	549	534	497	480	458	441	448	453	458	464	467
INDEPENDENCE ELEMENTARY	931	820	874	893	917	928	954	962	991	1,009	1,014	1,026	1,025
INDIAN CREEK ELEMENTARY	713	585	536	537	541	538	537	553	566	579	586	601	611
POLSER ELEMENTARY	634	422	394	392	380	391	405	421	429	435	435	441	446
ELEMENTARY TOTALS	5,763	4,891	4,830	4,787	4,762	4,754	4,781	4,879	4,981	5,053	5,078	5,131	5,165
Elementary Total Change		-121	-61	-43	-25	-8	27	98	102	72	25	53	34
Elementary Percent Change		-2.41%	-1.25%	-0.89%	-0.52%	-0.17%	0.57%	2.05%	2.09%	1.45%	0.49%	1.04%	0.66%
ARBOR CREEK MIDDLE SCHOOL	909	942	910	804	778	780	803	793	792	775	811	821	832
CREEK VALLEY MIDDLE SCHOOL	888	699	695	673	660	644	626	578	557	545	579	584	600
KILLIAN MIDDLE SCHOOL	1,121	952	947	1,013	995	1,055	1,029	1,036	993	1,011	1,037	1,078	1,103
MIDDLE SCHOOL TOTALS	2,918	2,593	2,552	2,490	2,433	2,479	2,458	2,407	2,342	2,331	2,427	2,483	2,535
Middle School Total Change		-76	-41	-62	-57	46	-21	-51	-65	-11	96	56	52
Middle School Percent Change		-2.85%	-1.58%	-2.43%	-2.29%	1.89%	-0.85%	-2.07%	-2.70%	-0.47%	4.12%	2.31%	2.09%
HEBRON 9th GRADE CAMPUS	1,193	985	872	917	913	834	848	870	868	842	797	808	831
HEBRON HIGH SCHOOL	3,038	2,633	2,712	2,710	2,750	2,693	2,653	2,572	2,529	2,567	2,556	2,486	2,431
HIGH SCHOOL TOTALS	4,231	3,618	3,584	3,627	3,663	3,527	3,501	3,442	3,397	3,409	3,353	3,294	3,262
High School Total Change		167	-34	43	36	-136	-26	-59	-45	12	-56	-59	-32
High School Percent Change		4.84%	-0.94%	1.20%	0.99%	-3.71%	-0.74%	-1.69%	-1.31%	0.35%	-1.64%	-1.76%	-0.97%
DISTRICT TOTALS	12,912	11,115	10,966	10,904	10,858	10,760	10,740	10,728	10,720	10,793	10,858	10,908	10,962
District Total Change		-27	-149	-62	-46	-98	-20	-12	-8	73	65	50	54
District Percent Change		-0.24%	-1.34%	-0.57%	-0.42%	-0.90%	-0.19%	-0.11%	-0.07%	0.68%	0.60%	0.46%	0.50%





The Colony High School Zone

- 64 Annual Closings (6.1%)
- 244 VDL (10.7%)
- 919 Futures (23.0%)





Vertical Zones- Ten Year Forecast

The Colony High School

CAMPUS	Optimal Capacity	History	Current	ENROLLMENT PROJECTIONS									
		2016/17	2017/18	2018/19	2019/20	2020/21	2021/22	2022/23	2023/24	2024/25	2025/26	2026/27	2027/28
CAMEY ELEMENTARY	720	581	594	609	673	726	763	819	872	923	972	1,024	1,069
ETHRIDGE ELEMENTARY	554	488	492	472	473	476	482	498	513	515	515	521	524
MORNINGSIDE ELEMENTARY	535	400	383	387	386	389	399	405	406	410	408	408	410
OWEN ELEMENTARY	515	445	388	369	368	371	362	362	368	376	366	365	361
PETERS COLONY ELEMENTARY	792	723	661	611	599	569	547	551	559	564	568	575	582
STEWARTS CREEK ELEMENTARY	436	410	369	375	391	390	404	396	403	401	403	406	410
ELEMENTARY TOTALS	3,552	3,047	2,887	2,823	2,890	2,921	2,957	3,031	3,121	3,189	3,232	3,299	3,356
Elementary Total Change		-58	-160	-64	67	31	36	74	90	68	43	67	57
Elementary Percent Change		-1.87%	-5.25%	-2.22%	2.37%	1.07%	1.23%	2.50%	2.97%	2.18%	1.35%	2.07%	1.73%
GRIFFIN MIDDLE SCHOOL	1,128	797	805	817	769	733	686	666	637	613	636	644	651
LAKEVIEW MIDDLE SCHOOL	846	727	708	715	697	679	648	689	709	759	824	856	885
MIDDLE SCHOOL TOTALS	1,974	1,524	1,513	1,532	1,466	1,412	1,334	1,355	1,346	1,372	1,460	1,500	1,536
Middle School Total Change		-35	-11	19	-66	-54	-78	21	-9	26	88	40	36
Middle School Percent Change		-2.25%	-0.72%	1.26%	-4.31%	-3.68%	-5.52%	1.57%	-0.66%	1.93%	6.41%	2.74%	2.40%
THE COLONY HIGH SCHOOL	2,228	2,089	2,054	2,005	1,975	1,991	2,030	1,943	1,898	1,865	1,761	1,803	1,836
HIGH SCHOOL TOTALS	2,228	2,089	2,054	2,005	1,975	1,991	2,030	1,943	1,898	1,865	1,761	1,803	1,836
High School Total Change		31	-35	-49	-30	16	39	-87	-45	-33	-104	42	33
High School Percent Change		1.51%	-1.68%	-2.39%	-1.50%	0.81%	1.96%	-4.29%	-2.32%	-1.74%	-5.58%	2.39%	1.83%
DISTRICT TOTALS	7,754	6,673	6,454	6,360	6,331	6,324	6,321	6,329	6,365	6,426	6,453	6,602	6,728
District Total Change		-59	-219	-94	-29	-7	-3	8	36	61	27	149	126
District Percent Change		-0.88%	-3.28%	-1.46%	-0.46%	-0.11%	-0.05%	0.13%	0.57%	0.96%	0.42%	2.31%	1.91%





Summary

- Lewisville's unemployment rate is currently 3.5%
- Lewisville ISD is on pace to start and close more than 1,000 homes in 2018 for the fourth consecutive year.
- The Indian Creek and Tom Hicks Elementary zones account for 30% of all annual closings within the district.
- The Bluebonnet and Camey Elementary Zones account for over 30% of all district future lots.
- While the district continues to see an impact from transfers to charter schools, incoming transfers have risen by over 70% during the past 5 years.
- 2022/23 projected enrollment: 50,347 students
- 2027/28 projected enrollment: 50,921 students